

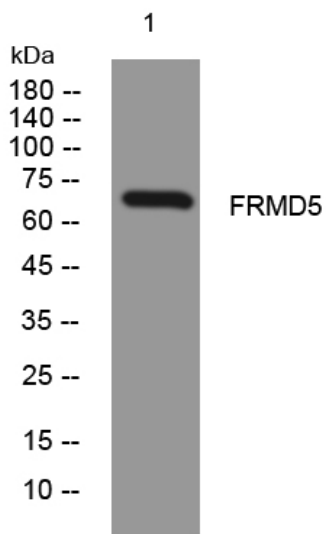


FRMD5 rabbit pAb

Catalog No	YP-Ab-08067
Isotype	IgG
Reactivity	Human; Mouse
Applications	WB
Gene Name	FRMD5
Protein Name	FRMD5
Immunogen	Synthesized peptide derived from human FRMD5 AA range: 491-541
Specificity	This antibody detects endogenous levels of FRMD5 at Human/Mouse
Formulation	Liquid in PBS containing 50% glycerol, 0.5% BSA and 0.182% sodium azide.
Source	Polyclonal, Rabbit,IgG
Purification	The antibody was affinity-purified from rabbit serum by affinity-chromatography using specific immunogen.
Dilution	WB 1:500-2000
Concentration	1 mg/ml
Purity	≥90%
Storage Stability	-20°C/1 year
Synonyms	FERM domain-containing protein 5
Observed Band	65kD
Cell Pathway	Membrane ; Single-pass membrane protein . Cell junction, adherens junction .
Tissue Specificity	Astrocyte,Skin,
Function	similarity:Contains 1 FERM domain.,
Background	
matters needing attention	Avoid repeated freezing and thawing!
Usage suggestions	This product can be used in immunological reaction related experiments. For more information, please consult technical personnel.



Products Images



Western blot analysis of lysates from Jarkat cells,
primary antibody was diluted at 1:1000, 4° over night