



POK17 rabbit pAb

Catalog No	YP-Ab-08114
Isotype	IgG
Reactivity	Human;Rat;Mouse;
Applications	WB
Gene Name	
Protein Name	POK17
Immunogen	Synthesized peptide derived from human POK17 AA range: 351-401
Specificity	This antibody detects endogenous levels of POK17 at Human
Formulation	Liquid in PBS containing 50% glycerol, 0.5% BSA and 0.229% sodium azide.
Source	Polyclonal, Rabbit,IgG
Purification	The antibody was affinity-purified from rabbit serum by affinity-chromatography using specific immunogen.
Dilution	WB 1:500-2000
Concentration	1 mg/ml
Purity	≥90%
Storage Stability	-20°C/1 year
Synonyms	HERV-K_11q22.1 provirus ancestral Pol protein [Includes: Reverse transcriptase (RT) (EC 2.7.7.49); Ribonuclease H (RNase H) (EC 3.1.26.4); Integrase (IN)]
Observed Band	105kD
Cell Pathway	
Tissue Specificity	
Function	<p>catalytic activity:Deoxynucleoside triphosphate + DNA(n) = diphosphate + DNA(n+1).,catalytic activity:Endonucleolytic cleavage to 5'-phosphomonoester.,domain:The LPQG and YXDD motifs are catalytically important and conserved among many retroviruses.,function:Early post-infection, the reverse transcriptase converts the viral RNA genome into double-stranded viral DNA. The RNase H domain of the reverse transcriptase performs two functions. It degrades the RNA template and specifically removes the RNA primer from the RNA/DNA hybrid. Following nuclear import, the integrase catalyzes the insertion of the linear, double-stranded viral DNA into the host cell chromosome. Endogenous Pol proteins may have kept, lost or modified their original function during evolution.,miscellaneous:Exact N-terminus of this protein has not been formally described.,miscellaneous:This protein is synthesized as Gag-Pr</p>
Background	



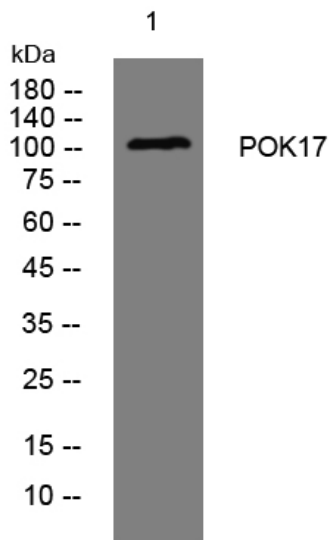
matters needing attention

Avoid repeated freezing and thawing!

Usage suggestions

This product can be used in immunological reaction related experiments. For more information, please consult technical personnel.

Products Images



Western blot analysis of lysates from SW480 cells, primary antibody was diluted at 1:1000, 4°over night