



# COLA1 rabbit pAb

|                           |   |
|---------------------------|---|
| <b>Catalog No</b>         | YP-Ab-08129   |
| <b>Isotype</b>            | IgG   |
| <b>Reactivity</b>         | Human;Rat;Mouse;  |
| <b>Applications</b>       | WB  |
| <b>Gene Name</b>          | COL21A1 COL1AL FP633  |
| <b>Protein Name</b>       | COLA1   |
| <b>Immunogen</b>          | Synthesized peptide derived from human COLA1 AA range: 101-151  |
| <b>Specificity</b>        | This antibody detects endogenous levels of COLA1 at Human   |
| <b>Formulation</b>        | Liquid in PBS containing 50% glycerol, 0.5% BSA and 0.244% sodium azide.  |
| <b>Source</b>             | Polyclonal, Rabbit,IgG  |
| <b>Purification</b>       | The antibody was affinity-purified from rabbit serum by affinity-chromatography using specific immunogen.   |
| <b>Dilution</b>           | WB 1:500-2000   |
| <b>Concentration</b>      | 1 mg/ml   |
| <b>Purity</b>             | ≥90%  |
| <b>Storage Stability</b>  | -20°C/1 year  |
| <b>Synonyms</b>           | Collagen alpha-1(XXI) chain   |
| <b>Observed Band</b>      | 105kD   |
| <b>Cell Pathway</b>       | Secreted, extracellular space, extracellular matrix . Cytoplasm . Found in the extracellular matrix component of blood vessel walls and in the cytoplasm of cultured human aortic smooth muscle.  |
| <b>Tissue Specificity</b> | Highly expressed in lymph node, jejunum, pancreas, stomach, trachea, testis, uterus and placenta; moderately expressed in brain, colon, lung, prostate, spinal cord, salivary gland and vascular smooth-muscle cells and very weakly expressed in heart, liver, kidney, bone marrow, spleen, thymus, skeletal muscle, adrenal gland and peripheral leukocytes. Expression in heart was higher in the right ventricle and atrium than in the left ventricle and atrium.  |
| <b>Function</b>           | caution:The sequence shown here is derived from an Ensembl automatic analysis pipeline and should be considered as preliminary data.,developmental stage:Highest expression observed at the fetal stage. Expressed by smooth-muscle cells in the artery wall in a PDGF-dependent way.,induction:Stimulated by platelet-derived growth factor (PDGF).,similarity:Belongs to the fibril-associated collagens with interrupted helices (FACIT) family.,similarity:Contains 1 TSP N-terminal (TSPN) domain.,similarity:Contains 1 VWFA domain.,similarity:Contains 6 collagen-like domains.,subcellular location:Found in the extracellular matrix component of blood vessel walls and in the cytoplasm of cultured human aortic smooth |



muscle.,tissue specificity:Highly expressed in lymph node, jejunum, pancreas, stomach, trachea, testis, uterus and placenta; moderately expressed in brain, colon, lung, prostate, spinal cord,

#### Background

This gene encodes the alpha chain of type XXI collagen, a member of the FACIT (fibril-associated collagens with interrupted helices) collagen family. Type XXI collagen is localized to tissues containing type I collagen and maintains the integrity of the extracellular matrix. Alternative splicing results in multiple transcript variants. [provided by RefSeq, Jan 2016],

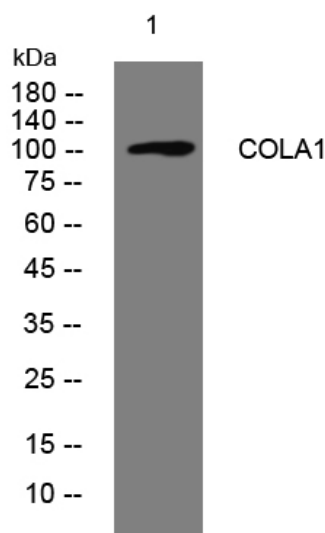
#### matters needing attention

Avoid repeated freezing and thawing!

#### Usage suggestions

This product can be used in immunological reaction related experiments. For more information, please consult technical personnel.

### Products Images



Western blot analysis of lysates from A549 cells, primary antibody was diluted at 1:1000, 4° over night