



ARVC rabbit pAb

Catalog No	YP-Ab-08142
Isotype	IgG
Reactivity	Human; Mouse
Applications	WB
Gene Name	ARVCF
Protein Name	ARVC
Immunogen	Synthesized peptide derived from human ARVC AA range: 563-613
Specificity	This antibody detects endogenous levels of ARVC at Human/Mouse
Formulation	Liquid in PBS containing 50% glycerol, 0.5% BSA and 0.257% sodium azide.
Source	Polyclonal, Rabbit,IgG
Purification	The antibody was affinity-purified from rabbit serum by affinity-chromatography using specific immunogen.
Dilution	WB 1:500-2000
Concentration	1 mg/ml
Purity	≥90%
Storage Stability	-20°C/1 year
Synonyms	Armadillo repeat protein deleted in velo-cardio-facial syndrome
Observed Band	105kD
Cell Pathway	Cell junction .
Tissue Specificity	Found in all the examined tissues including heart, brain, liver and kidney. Found at low level in lung. Expressed in dermal connective tissue, salivary gland duct and in the corneal layer (at protein level) (PubMed:30479852). Expressed in arrector pili muscle (at protein level) (PubMed:29034528).
Function	disease:Gene deleted in velo-cardio-facial syndrome (VCFS); it is hemizygous in all VCFS patients with interstitial deletions. This hemizygosity may play a role in the etiology of some of the phenotypes associated with VCFS characterized by a wide spectrum phenotypes, including conotruncal heart defects, cleft palate and facial dysmorphology.,function:Involved in protein-protein interactions at adherens junctions.,similarity:Belongs to the beta-catenin family.,similarity:Contains 10 ARM repeats.,tissue specificity:Found in all the examined tissues including heart, brain, liver and kidney. Found at low level in lung.,
Background	Armadillo Repeat gene deleted in Velo-Cardio-Facial syndrome (ARVCF) is a member of the catenin family. This family plays an important role in the formation of adherens junction complexes, which are thought to facilitate communication between the inside and outside environments of a cell. The ARVCF gene was isolated in the search for the genetic defect responsible for the autosomal



dominant Velo-Cardio-Facial syndrome (VCFS), a relatively common human disorder with phenotypic features including cleft palate, conotruncal heart defects and facial dysmorphism. The ARVCF gene encodes a protein containing two motifs, a coiled coil domain in the N-terminus and a 10 armadillo repeat sequence in the midregion. Since these sequences can facilitate protein-protein interactions ARVCF is thought to function in a protein complex. In addition, ARVCF contains a predicted nuclear-targeting sequence suggesting that it may have a function as a nuclear protein. [provided by RefSeq, Jun 2010],

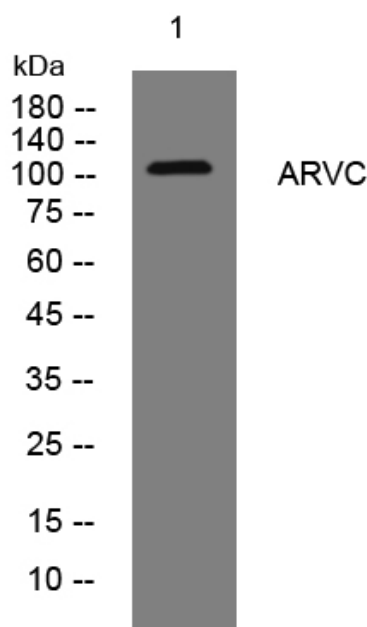
matters needing attention

Avoid repeated freezing and thawing!

Usage suggestions

This product can be used in immunological reaction related experiments. For more information, please consult technical personnel.

Products Images



Western blot analysis of lysates from 293T cells, primary antibody was diluted at 1:1000, 4° over night