



## Ku70 mouse mAb

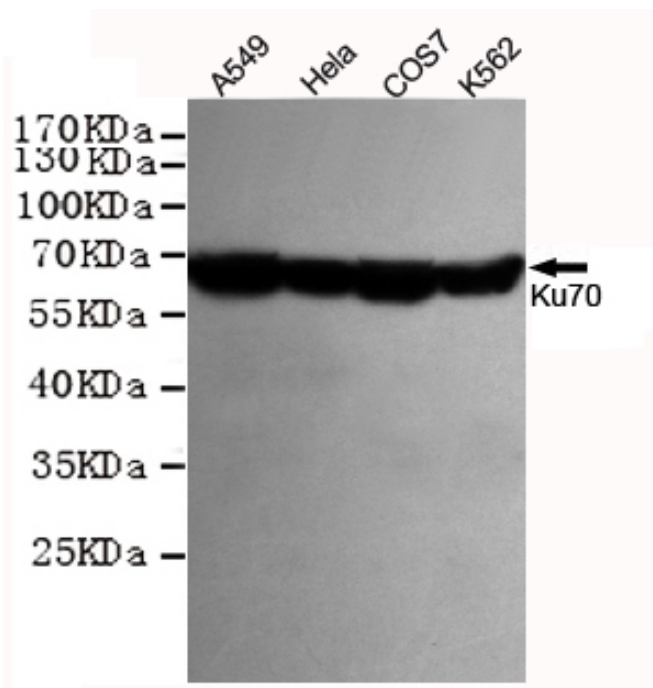
<b>Catalog No</b>	YP-Ab-00100
<b>Isotype</b>	IgG
<b>Reactivity</b>	Human;Monkey
<b>Applications</b>	WB;ICC;IP
<b>Gene Name</b>	xrcc6
<b>Protein Name</b>	
<b>Immunogen</b>	Purified recombinant human Ku70 protein fragments expressed in E.coli.
<b>Specificity</b>	This antibody detects endogenous levels of Ku70 and does not cross-react with related proteins.
<b>Formulation</b>	Liquid in PBS containing 50% glycerol, 0.5% BSA and 0.02% sodium azide.
<b>Source</b>	Monoclonal, Mouse
<b>Purification</b>	The antibody was affinity-purified from mouse ascites by affinity-chromatography using epitope-specific immunogen.
<b>Dilution</b>	wb dilution 1:1000 icc dilution 1:200
<b>Concentration</b>	1 mg/ml
<b>Purity</b>	≥90%
<b>Storage Stability</b>	-20°C/1 year
<b>Synonyms</b>	5"-deoxyribose-5-phosphate lyase Ku70;5"-dRP lyase Ku70;70 kDa subunit of Ku antigen; ATP dependent DNA helicase 2 subunit 1;ATP dependent DNA helicase II 70 kDa subunit;ATP-dependent DNA helicase 2 subunit 1;ATP-dependent DNA helicase II 70 kDa subunit;CTC box binding factor 75 kDa subunit;CTC box-binding factor 75 kDa subunit;CTC75;CTCBF;CTCBF; DNA repair protein XRCC6;G22P1;Ku 70;Ku autoantigen 70kDa;Ku autoantigen p70 subunit;Ku autoantigen, 70kDa;Ku p70;Ku70;Ku70 DNA binding component of DNA-dependent proteinkinase complex (thyroid autoantigen 70 kDa;Kup70;Lupus Ku autoantigen protein p70;ML8;Thyroid autoantigen 70kD (Ku antigen);Thyroid autoantigen;Thyroid lupus autoantigen;Thyroid lupus autoantigen;Thyroid lupus autoantigen p70;Thyroid-lupus autoantigen;TLAA;TLAA;X ray repair complementing defective repair in Chinese hamster cells 6;X-ray repair complementing defective repair in Chinese hamster cells 6;X-ray repair cross-complementing protein 6;XRCC 6;XRCC6;XRCC6_HUMAN.
<b>Observed Band</b>	67kD
<b>Cell Pathway</b>	Nucleus . Chromosome .



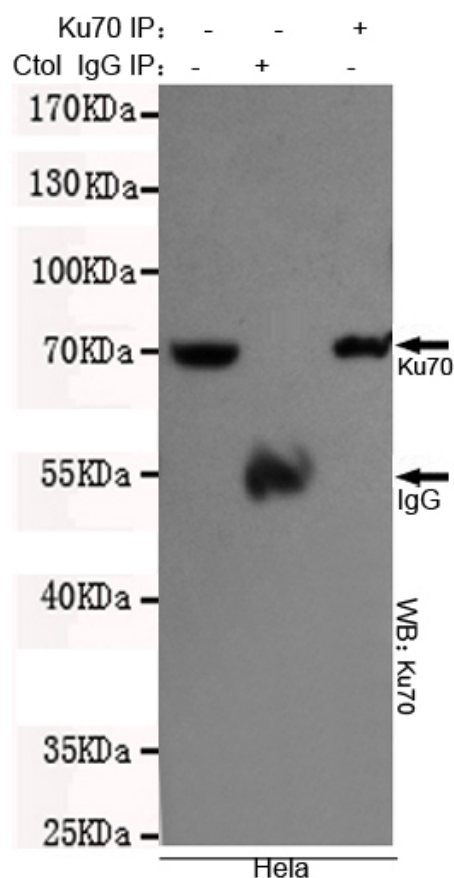
<b>Tissue Specificity</b>	Brain,Cervix carcinoma,Epithelium,Heart,Hepatocyte,Kidney,Liver,Lun
<b>Function</b>	developmental stage:Expression does not increase during promyelocyte differentiation.,disease:Individuals with systemic lupus erythematosus (SLE) and related disorders produce extremely large amounts of autoantibodies to p70 and p86. Existence of a major autoantigenic epitope or epitopes on the C-terminal 190 amino acids of p70 containing the leucine repeat. The majority of autoantibodies to p70 in most sera from patients with SLE seem to be reactive with this region.,function:Single stranded DNA-dependent ATP-dependent helicase. Has a role in chromosome translocation. The DNA helicase II complex binds preferentially to fork-like ends of double-stranded DNA in a cell cycle-dependent manner. It works in the 3'-5' direction. Binding to DNA may be mediated by p70. Involved in DNA nonhomologous end joining (NHEJ) required for double-strand break repair and V(D)J recombination. The Ku p70/p86
<b>Background</b>	The p70/p80 autoantigen is a nuclear complex consisting of two subunits with molecular masses of approximately 70 and 80 kDa. The complex functions as a single-stranded DNA-dependent ATP-dependent helicase. The complex may be involved in the repair of nonhomologous DNA ends such as that required for double-strand break repair, transposition, and V(D)J recombination. High levels of autoantibodies to p70 and p80 have been found in some patients with systemic lupus erythematosus. [provided by RefSeq, Jul 2008],
<b>matters needing attention</b>	Avoid repeated freezing and thawing!
<b>Usage suggestions</b>	This product can be used in immunological reaction related experiments. For more information, please consult technical personnel.



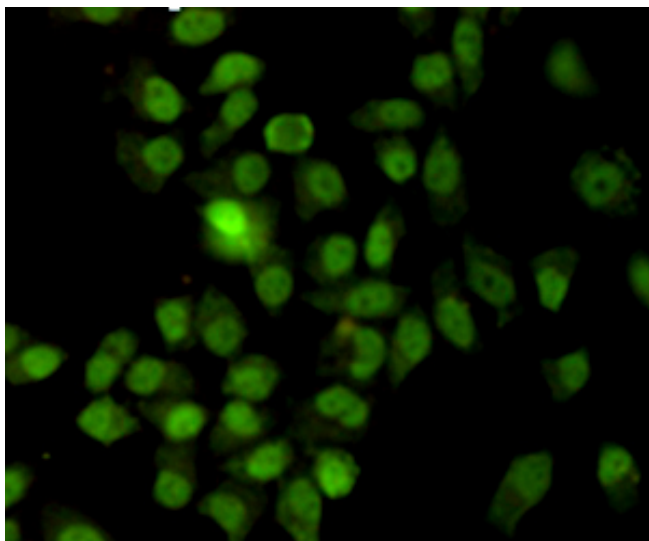
## Products Images



Western blot detection of Ku70 in HeLa, A549, COS7 and K562 cell lysates using Ku70 mouse mAb (1:1000 diluted). Predicted band size: 70KDa. Observed band size: 67KDa.



Immunocytochemistry staining of HeLa cells fixed with  $-20^{\circ}\text{C}$  Methanol and using anti-Ku70 antibody (dilution 1:200).



Immunoprecipitation analysis of HeLa cell lysates using Ku70 mouse mAb.