



KDM1/LSD1 mouse mAb

Catalog No	YP-Ab-01061
Isotype	IgG
Reactivity	Human;Monkey
Applications	WB;ICC;IP
Gene Name	kdm1a
Protein Name	
Immunogen	Purified recombinant human KDM1/LSD1 protein fragments expressed in E.coli.
Specificity	This antibody detects endogenous levels of KDM1/LSD1 and does not cross-react with related proteins.
Formulation	Liquid in PBS containing 50% glycerol, 0.5% BSA and 0.02% sodium azide.
Source	Monoclonal, Mouse
Purification	The antibody was affinity-purified from mouse ascites by affinity-chromatography using epitope-specific immunogen.
Dilution	wb 1:1000 icc 1:100
Concentration	1 mg/ml
Purity	≥90%
Storage Stability	-20°C/1 year
Synonyms	Amine oxidase (flavin containing) domain 2;AOF2;BHC110;BRAF35 HDAC complex protein BHC110;BRAF35-HDAC complex protein BHC110;FAD binding protein BRAF35 HDAC complex, 110 kDa subunit;Flavin-containing amine oxidase domain-containing protein 2;KDM 1;KDM1;Kdm1a;KDM1A_HUMAN;LSD 1;LSD1;Lysine (K) specific demethylase 1;Lysine (K) specific demethylase 1A;Lysine specific histone demethylase 1;Lysine specific histone demethylase 1A;Lysine-specific histone demethylase 1A.
Observed Band	110kD
Cell Pathway	Nucleus .
Tissue Specificity	Ubiquitously expressed.
Function	cofactor:FAD.,domain:The SWIRN domain may act as an anchor site for a histone tail.,function:Histone demethylase that demethylates 'Lys-4' of histone H3, a specific tag for epigenetic transcriptional activation, thereby acting as a corepressor. Acts by oxidizing the substrate by FAD to generate the corresponding imine that is subsequently hydrolyzed. Demethylates both mono- and di-methylated 'Lys-4' of histone H3. May play a role in the repression of neuronal genes. Alone, it is unable to demethylate H3 'Lys-4' on nucleosomes and requires the presence of RCOR1/CoREST to achieve such activity. May also



demethylate 'Lys-9' of histone H3, a specific tag for epigenetic transcriptional repression, thereby leading to derepression of androgen receptor target genes. Demethylates di-methylated 'Lys-370' of p53/TP53 which prevents interaction of p53/TP53 with TP53BP1 and represses p53/TP53-mediate

Background

This gene encodes a nuclear protein containing a SWIRM domain, a FAD-binding motif, and an amine oxidase domain. This protein is a component of several histone deacetylase complexes, though it silences genes by functioning as a histone demethylase. Alternative splicing results in multiple transcript variants. [provided by RefSeq, Apr 2009],

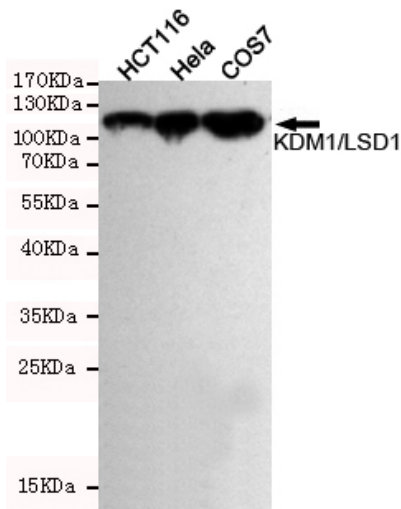
matters needing attention

Avoid repeated freezing and thawing!

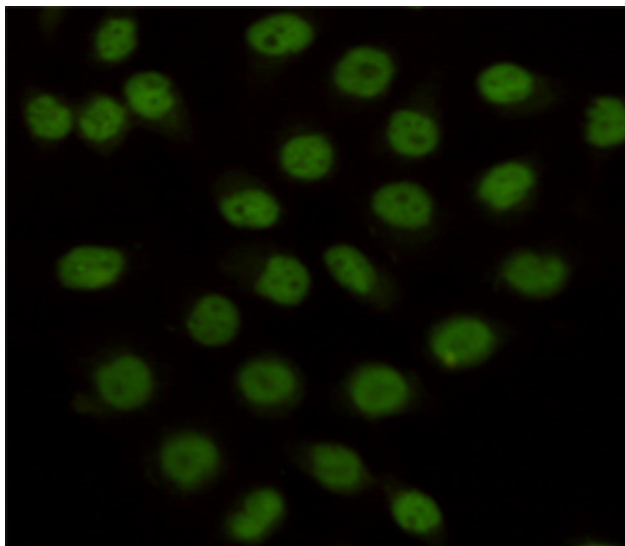
Usage suggestions

This product can be used in immunological reaction related experiments. For more information, please consult technical personnel.

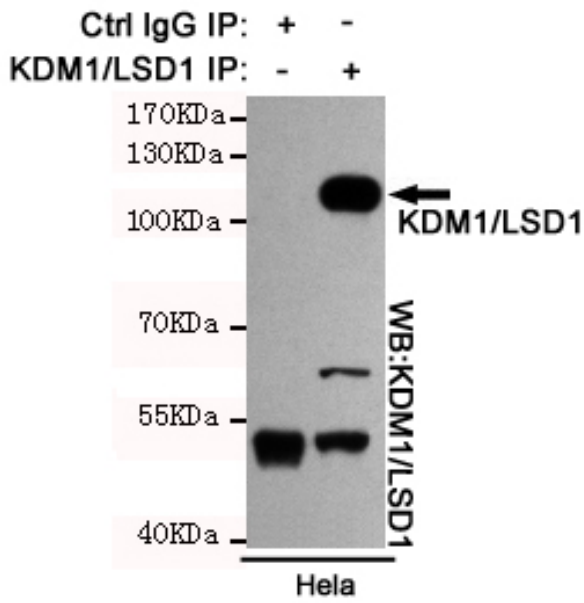
Products Images



Western blot detection of KDM1/LSD1 in HeLa, HCT116 and COS7 cell lysates using KDM1/LSD1 mouse mAb (1:1000 diluted). Predicted band size: 110KDa. Observed band size: 110KDa.



Immunocytochemistry staining of HeLa cells fixed with 4% Paraformaldehyde and using anti-KDM1/LSD1 mouse mAb (dilution 1:100).



Immunoprecipitation analysis of HeLa cell lysates using KDM1/LSD1 mouse mAb.