

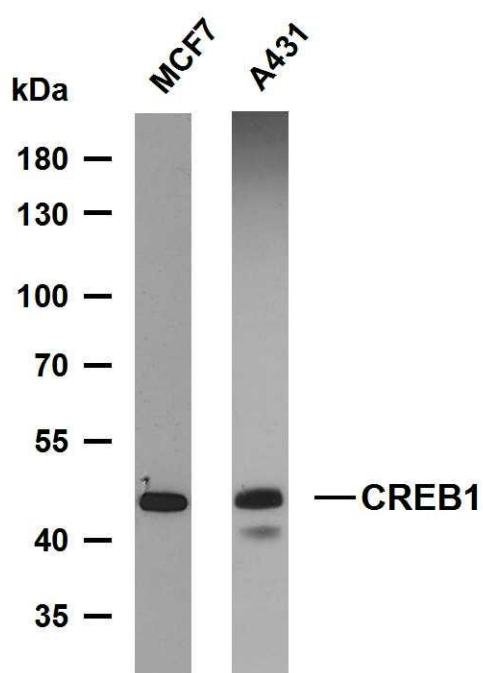


# CREB1 (PTR2317) mouse mAb

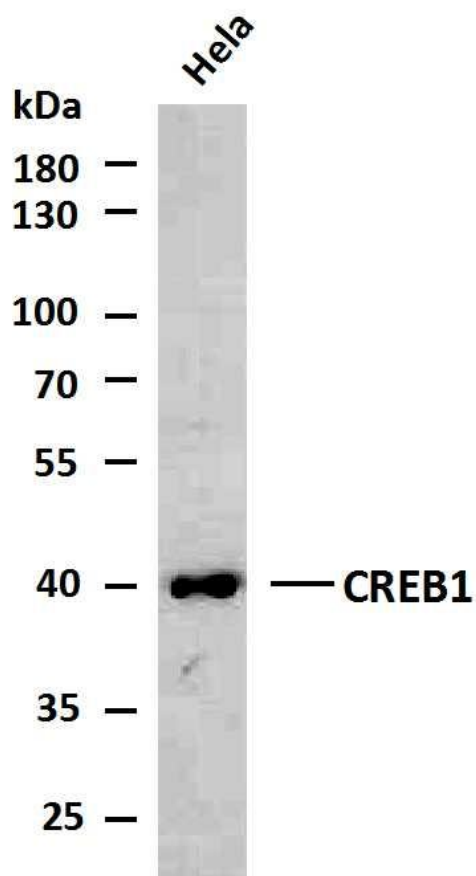
|                                  |  |
|----------------------------------|--|
| <b>Catalog No</b>                | YP-Ab-01142  |
| <b>Isotype</b>                   | IgG  |
| <b>Reactivity</b>                | Human;Mouse;Rat;   |
| <b>Applications</b>              | WB;IF;ELISA  |
| <b>Gene Name</b>                 | CREB1  |
| <b>Protein Name</b>              | Cyclic AMP-responsive element-binding protein 1  |
| <b>Immunogen</b>                 | Recombinant Protein of human CREB-1 AA range: 100-200  |
| <b>Specificity</b>               | This antibody detects endogenous levels of CREB1 protein.  |
| <b>Formulation</b>               | PBS, 50% glycerol, 0.05% Proclin 300, 0.05%BSA   |
| <b>Source</b>                    | Mouse, Monoclonal/IgG1, kappa  |
| <b>Purification</b>              | Protein G  |
| <b>Dilution</b>                  | WB 1:500-2000. IF 1:100-500. ELISA 1:1000-5000   |
| <b>Concentration</b>             | 1 mg/ml  |
| <b>Purity</b>                    | ≥90%   |
| <b>Storage Stability</b>         | -20°C/1 year   |
| <b>Synonyms</b>                  | CREB1;Cyclic AMP-responsive element-binding protein 1;CREB-1;cAMP-responsive element-binding protein 1   |
| <b>molecular weight</b>          | 36kD   |
| <b>Observed Band</b>             | 43kD   |
| <b>Cell Pathway</b>              | Nucleus .  |
| <b>Tissue Specificity</b>        | Eye,Placenta,Spleen,Testis,  |
| <b>Background</b>                | This gene encodes a transcription factor that is a member of the leucine zipper family of DNA binding proteins. This protein binds as a homodimer to the cAMP-responsive element, an octameric palindrome. The protein is phosphorylated by several protein kinases, and induces transcription of genes in response to hormonal stimulation of the cAMP pathway. Alternate splicing of this gene results in several transcript variants encoding |
| <b>matters needing attention</b> | Avoid repeated freezing and thawing!   |
| <b>Usage suggestions</b>         | This product can be used in immunological reaction related experiments. For more information, please consult technical personnel.  |



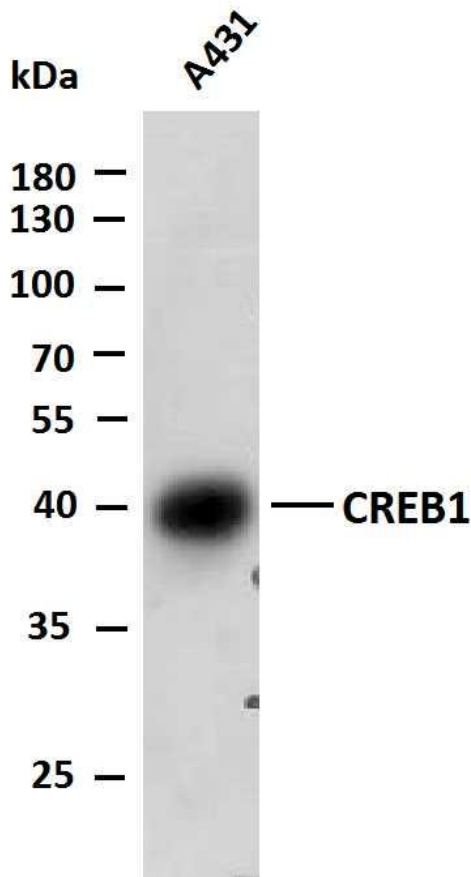
## Products Images



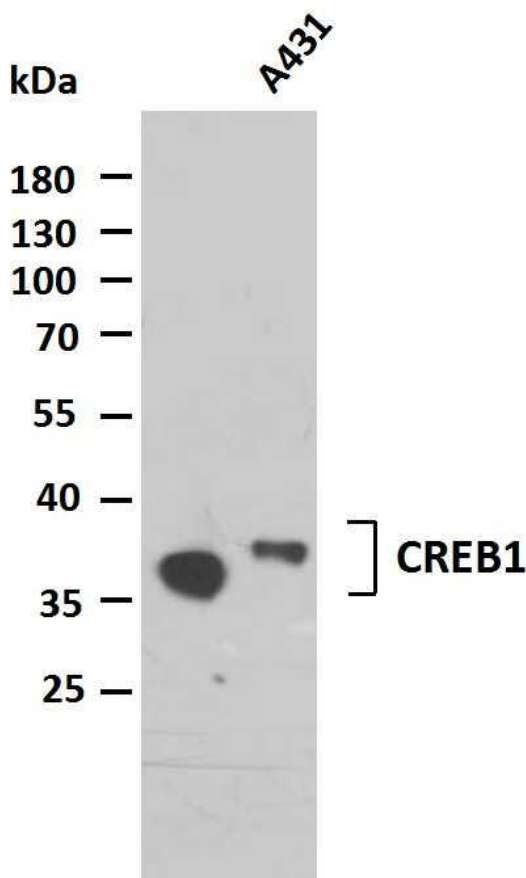
Various whole cell lysates were separated by 10% SDS-PAGE and the membrane was blotted with anti-CREB1(PTR2317) antibody. The HRP-conjugated Goat anti-Mouse IgG(H + L) antibody was used to detect the antibody. Lane 1: MCF7 Lane2: A431



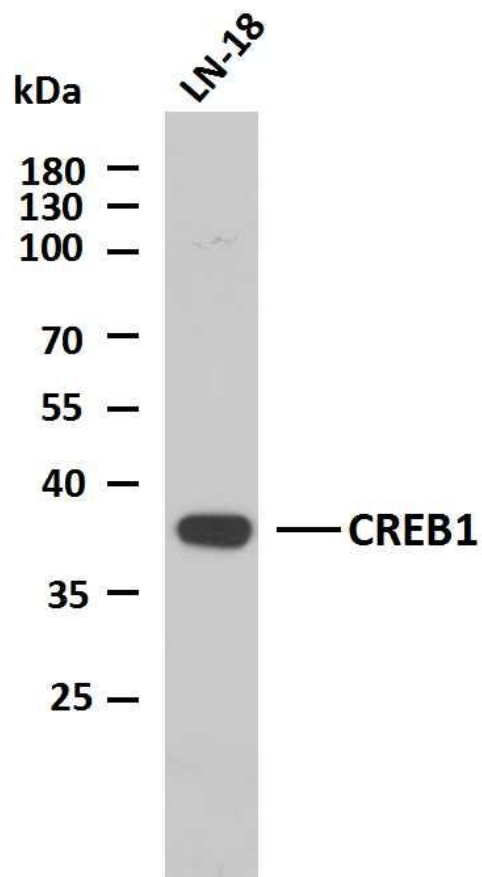
Whole cell lysates of HeLa were separated by 10% SDS-PAGE and the membrane was blotted with anti-CREB1 antibody. The HRP-conjugated Goat anti-Mouse IgG(H + L) antibody was used to detect the antibody, Lane 1: HeLa



Whole cell lysates of A431 were separated by 10% SDS-PAGE and the membrane was blotted with anti-CREB1 antibody. The HRP-conjugated Goat anti-Mouse IgG(H + L) antibody was used to detect the antibody, Lane 1:A431



Various cell lysates were separated by 10% SDS-PAGE, and the membrane was blotted with anti-CREB1 antibody. The HRP-conjugated Goat anti-Mouse IgG(H + L) antibody was used to detect the antibody Lane 1: HEK293 lane 1:A431



Whole cell lysates of LN-18 were separated by 10% SDS

PAGE, and the membrane was blotted with anti-CREB1

antibody. The HRP-conjugated Goat anti-Mouse IgG(H + L)antibody was used to detect the antibody. Lane 1:LN-18