



## GRB2 mouse mAb

<b>Catalog No</b>	YP-Ab-03458
<b>Isotype</b>	IgG
<b>Reactivity</b>	Human;Mouse;Rat
<b>Applications</b>	WB
<b>Gene Name</b>	grb2
<b>Protein Name</b>	
<b>Immunogen</b>	Recombinant protein of human GRB2.
<b>Specificity</b>	This antibody detects endogenous levels of GRB2 and does not cross-react with related proteins.
<b>Formulation</b>	Liquid in PBS containing 50% glycerol, 0.5% BSA and 0.02% sodium azide.
<b>Source</b>	Monoclonal, Mouse
<b>Purification</b>	The antibody was affinity-purified from mouse ascites by affinity-chromatography using epitope-specific immunogen.
<b>Dilution</b>	wb 1:1000
<b>Concentration</b>	1 mg/ml
<b>Purity</b>	≥90%
<b>Storage Stability</b>	-20°C/1 year
<b>Synonyms</b>	Abundant SRC homology; Adapter protein GRB2; ASH; Ash protein; EGFRBP GRB2; Epidermal growth factor receptor binding protein; Epidermal growth factor receptor binding protein GRB2; GRB 2; GRB2 adapter protein; Grb2; GRB2_HUMAN; Grb3 3; Growth factor receptor bound protein 2; Growth factor receptor bound protein 3; Growth factor receptor-bound protein 2; HT027; MST084; MSTP084; NCKAP2; OTTHUMP00000166096; OTTHUMP00000166097; OTTHUMP00000166098; Protein ASH; SEM5; SH2/SH3 adapter GRB2.
<b>Observed Band</b>	25kD
<b>Cell Pathway</b>	Nucleus . Cytoplasm . Endosome . Golgi apparatus .
<b>Tissue Specificity</b>	Brain,Cajal-Retzius cell,Epidermis,Epithelium,Fetal brain cortex,Fe
<b>Function</b>	alternative products:Additional isoforms seem to exist,domain:The SH3 domains mediate interaction with RALGPS1 and SHB.,function:Adapter protein that provides a critical link between cell surface growth factor receptors and the Ras signaling pathway.,function:Isoform GRB3-3 does not bind to phosphorylated epidermal growth factor receptor (EGFR) but inhibits EGF-induced transactivation of a RAS-responsive element. Isoform GRB3-3 acts as a dominant negative



protein over GRB2 and by suppressing proliferative signals, may trigger active programmed cell death.,similarity:Belongs to the GRB2/sem-5/DRK family.,similarity:Contains 1 SH2 domain.,similarity:Contains 2 SH3 domains.,subunit:Associates with activated Tyr-phosphorylated EGF receptors and PDGF receptors via its SH2 domain. Also associates to other cellular Tyr-phosphorylated proteins such as SIT1, IRS1, IRS4, SHC and LNK; probably via

#### Background

The protein encoded by this gene binds the epidermal growth factor receptor and contains one SH2 domain and two SH3 domains. Its two SH3 domains direct complex formation with proline-rich regions of other proteins, and its SH2 domain binds tyrosine phosphorylated sequences. This gene is similar to the Sem5 gene of C.elegans, which is involved in the signal transduction pathway. Two alternatively spliced transcript variants encoding different isoforms have been found for this gene. [provided by RefSeq, Jul 2008],

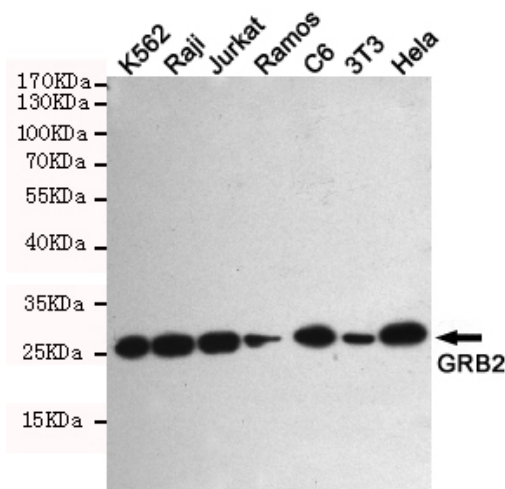
#### matters needing attention

Avoid repeated freezing and thawing!

#### Usage suggestions

This product can be used in immunological reaction related experiments. For more information, please consult technical personnel.

## Products Images



Western blot detection of GRB2 in K562, Raji, Jurkat, Ramos, C6, 3T3 and Hela cell lysates using GRB2 mouse mAb (1:1000 diluted). Predicted band size: 25KDa. Observed band size: 25KDa.