



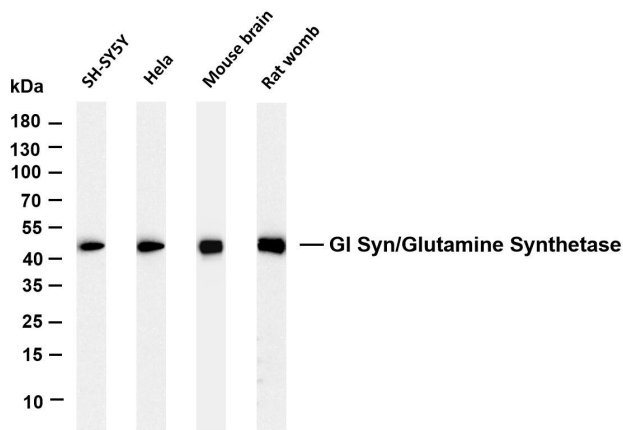
GI Syn/Glutamine Synthetase (PTR1400) Mouse mAb

货号	YP-mAb-18303
同位型	IgG
应用	WB,IF,ELISA,IHC
种属	Human,Mouse,Rat,
别名	GLUL ;GLNS ;Glutamine synthetase ;GS ;Glutamate decarboxylase ;Glutamate--ammonia ligase
基因名称	GLUL
蛋白名称	Glutamine synthetase
免疫原	AA range: 300-400
特异性	This antibody detects endogenous levels of GI Syn/Glutamine Synthetase protein.
组成	PBS, 50% glycerol, 0.05% Proclin 300, 0.05%BSA
来源	Mouse Monoclonal antibody
稀释	IHC 1:200-1000;WB 1:500-2000;IF 1:100-500;ELISA 1:1000-5000;
纯化工艺	The antibody was affinity-purified from ascites by affinity-chromatography using specific immunogen.
分子量	42kD
实测条带	42kD
背景	The protein encoded by this gene belongs to the glutamine synthetase family. It catalyzes the synthesis of glutamine from glutamate and ammonia in an ATP-dependent reaction. This protein plays a role in ammonia and glutamate detoxification, acid-base homeostasis, cell signaling, and cell proliferation. Glutamine is an abundant amino acid, and is important to the biosynthesis of several amino acids, pyrimidines, and purines. Mutations in this gene are associated with congenital glutamine deficiency, and overexpression of this gene was observed in some primary liver cancer samples. There are six pseudogenes of this gene found on chromosomes 2, 5, 9, 11, and 12. Alternative splicing results in multiple transcript variants. [provided by RefSeq, Dec 2014],
功能	Catalytic activity:ATP + L-glutamate + NH(3) = ADP + phosphate + L-glutamine.,Disease:Defects in GLUL are the cause of congenital systemic glutamine deficiency (CSGD) [MIM:610015]. CSGD is a rare developmental disorder with severe brain malformation resulting in multi-organ failure and neonatal death. Glutamine is largely absent from affected patients serum, urine and cerebrospinal fluid.,online information:Glutamine synthetase entry,similarity:Belongs to the glutamine synthetase family.,subunit:Homooctamer.,
细胞定位	Membrane, Cytoplasm
组织表达	Expressed in endothelial cells.



浓度	1 mg/ml
储存	-15°C to -25°C/1 year(Do not lower than -25°C)
有关注意事项	Avoid repeated freezing and thawing!
使用建议	This product can be used in immunological reaction related experiments. For more information, please consult technical personnel.

Products Images



Various whole cell lysates were separated by 4-20% SDS-PAGE, and the membrane was blotted with anti-GI Syn/Glutamine Synthetase (PTR1400) antibody. The HRP-conjugated Goat anti-Rabbit IgG(H + L) antibody was used to detect the antibody.

Lane 1: SH-SY5Y

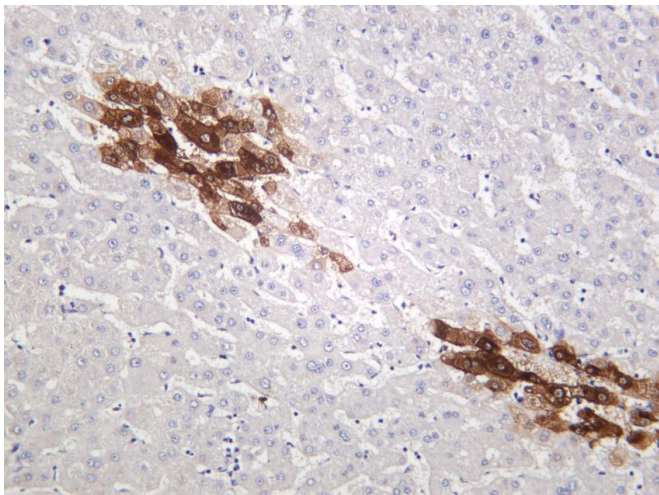
Lane 2: HeLa

Lane 3: Mouse brain

Lane 4: Rat womb

Predicted band size: 42kDa

Observed band size: 42kDa



Human liver was stained with anti-GI Syn/Glutamine Synthetase (PTR1400) mouse antibody