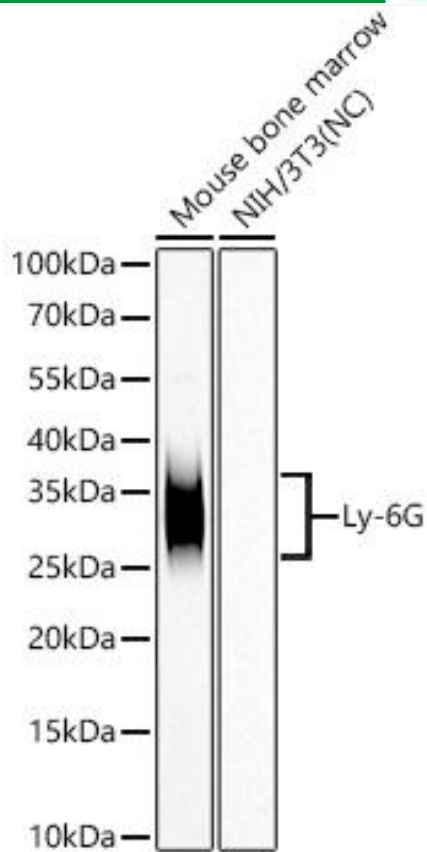




Ly-6G mouse mAb (A22270)

货号	YP-mAb-18315
同位型	IgG
应用	WB
种属	Human, Mouse,Rat
其他名称	Gr1; Gr-1; Ly-6G
免疫原	Recombinant fusion protein containing a sequence corresponding to amino acids 27-105 of mouse Ly-6G (NP_001297367.1).
稀释	WB 1:5500 - 1:22000 IHC-P 1:2000 - 1:8000 IF/ICC 1:400-1:1600 ELISA Recommended starting concentration is 1 µg/mL. Please optimize the concentration based on your specific assay requirements.
纯化工艺	Affinity purification
实际分子量	20-40kDa
理论分子量	14kDa
背景	Located in external side of plasma membrane.
浓度	1 mg/ml
储存	Store at -20°C. Avoid freeze / thaw cycles. Buffer: PBS with 0.05% proclin300,0.05% BSA,50% glycerol,pH7.3.
有关注意事项	Avoid repeated freezing and thawing!
使用建议	This product can be used in immunological reaction related experiments. For more information, please consult technical personnel.

Products Images



Western blot analysis of various lysates using Ly-6G Mouse mAb (A22270) at 1:11000 dilution incubated overnight at 4°C.

Secondary antibody: HRP-conjugated Goat anti-Mouse IgG (H+L) (AS014) at 1:10000 dilution.

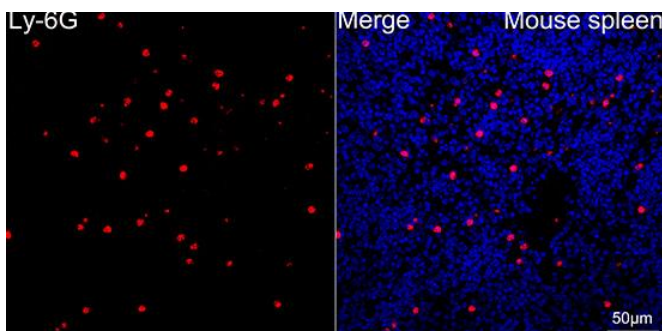
Lysates/proteins: 25 µg per lane.

Blocking buffer: 3% nonfat dry milk in TBST.

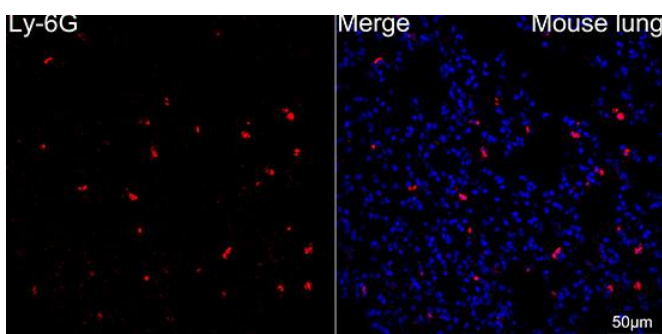
Detection: ECL Basic Kit (RM00020).

Negative control (NC): NIH/3T3

Exposure time: 45s.

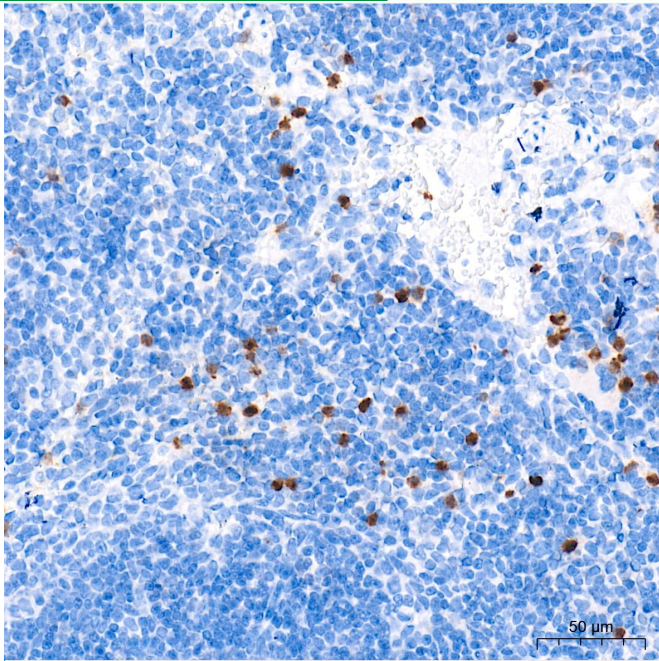


Confocal imaging of paraffin-embedded Mouse spleen tissue using Ly-6G Mouse mAb (A22270, dilution 1:800) followed by a further incubation with Cy3 Goat Anti-Mouse IgG (H+L) (AS007, dilution 1:500) (Red). DAPI was used for nuclear staining (Blue). High pressure antigen retrieval performed with 0.01M Citrate Buffer (pH 6.0) prior to IF staining. Objective: 40x.



Confocal imaging of paraffin-embedded Mouse lung tissue using Ly-6G Mouse mAb (A22270, dilution 1:800) followed by a further incubation with Cy3 Goat Anti-Mouse IgG (H+L) (AS007, dilution 1:500) (Red). DAPI was used for nuclear staining (Blue). High pressure antigen retrieval performed with 0.01M Citrate Buffer (pH 6.0) prior to IF staining. Objective: 40x.

Immunohistochemistry analysis of paraffin-embedded Mouse spleen tissue using Ly-6G Mouse mAb (A22270) at a dilution of 1:4000 (40x lens). High pressure antigen retrieval performed with 0.01M Tris-EDTA Buffer (pH



9.0) prior to IHC staining.