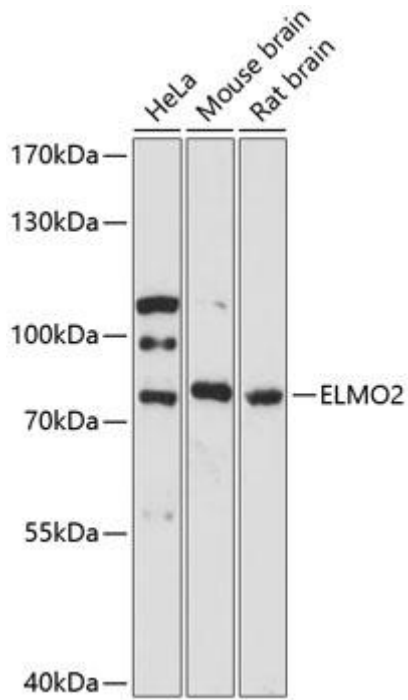




ELMO2 mouse mAb

货号	YP-mAb-18327
同位型	IgG
应用	WB
种属	Human, Mouse,Rat
其他名称	VMPI; CED12; CED-12; ELMO-2; Ced-12A; ELMO2
免疫原	Recombinant fusion protein containing a sequence corresponding to amino acids 42-120 of human ELMO2 (NP_877496.1).
稀释	WB 1:500-2000
纯化工艺	Affinity purification
分子量	83kDa
背景	The protein encoded by this gene interacts with the dedicator of cyto-kinesis 1 protein. Similarity to a <i>C. elegans</i> protein suggests that this protein may function in phagocytosis of apoptotic cells and in cell migration. Alternative splicing results in multiple transcript variants
浓度	1 mg/ml
储存	-15°C to -25°C/1 year(Do not lower than -25°C)
有关注意事项	Avoid repeated freezing and thawing!
使用建议	This product can be used in immunological reaction related experiments. For more information, please consult technical personnel.

Products Images



Western blot analysis of various lysates using ELMO2 Rabbit pAb (A13785) at 1:3000 dilution.

Secondary antibody: HRP Goat Anti-Mouse IgG (H+L) (AS014) at 1:10000 dilution.

Lysates/proteins: 25 μ g per lane.

Blocking buffer: 3% nonfat dry milk in TBST.

Detection: ECL Basic Kit (RM00020).

Exposure time: 90s.