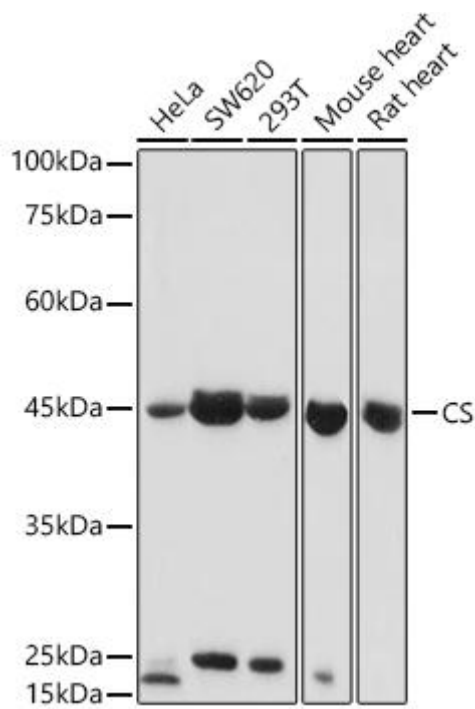




CS mouse mAb

货号	YP-mAb-18336
同位型	IgG
应用	WB
种属	Human, Mouse,Rat
其他名称	CS
免疫原	Recombinant fusion protein containing a sequence corresponding to amino acids 167-466 of human CS (NP_004068.2).
稀释	WB 1:500 - 1:1000
纯化工艺	Affinity purification
分子量	45kDa
背景	The protein encoded by this gene is a Krebs tricarboxylic acid cycle enzyme that catalyzes the synthesis of citrate from oxaloacetate and acetyl coenzyme A. The enzyme is found in nearly all cells capable of oxidative metabolism. This protein is nuclear encoded and transported into the mitochondrial matrix, where the mature form is found.
浓度	1 mg/ml
储存	-15°C to -25°C/1 year(Do not lower than -25°C)
有关注意事项	Avoid repeated freezing and thawing!
使用建议	This product can be used in immunological reaction related experiments. For more information, please consult technical personnel.

Products Images



Western blot analysis of extracts of various cell lines, using CS antibody (A5713) at 1:1000 dilution.

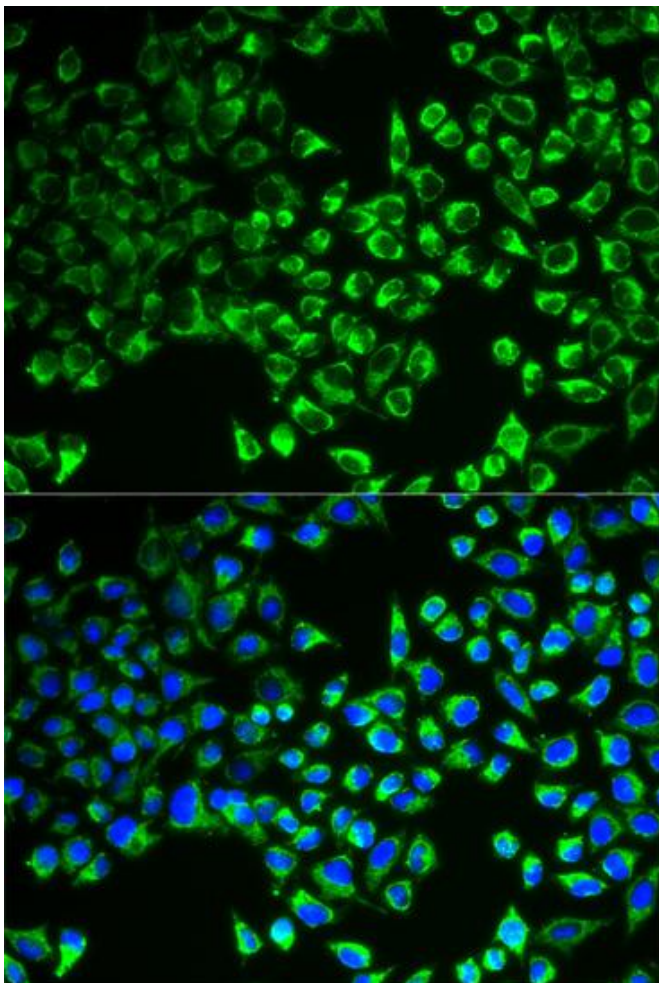
Secondary antibody: HRP Goat Anti-Mouse IgG (H+L) (AS014) at 1:10000 dilution.

Lysates/proteins: 25 μ g per lane.

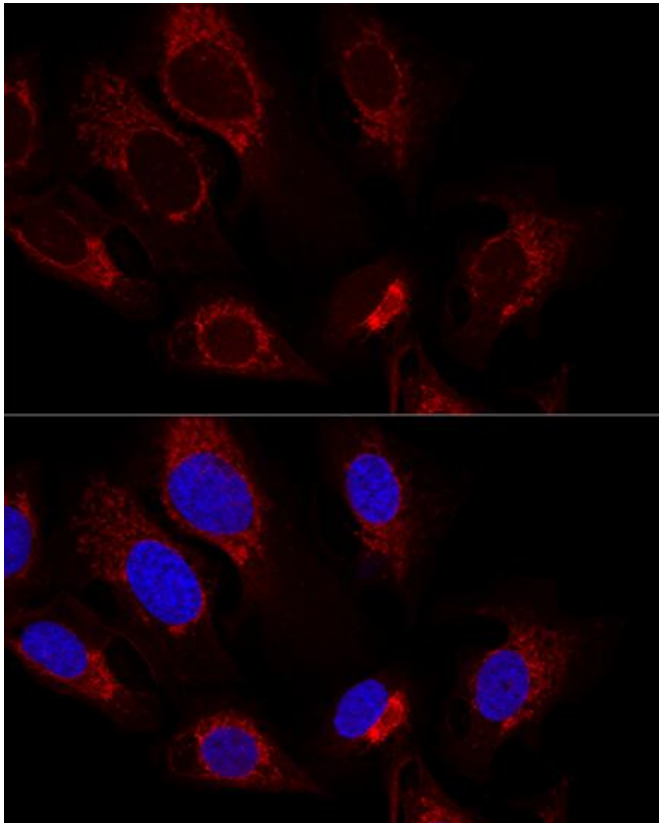
Blocking buffer: 3% nonfat dry milk in TBST.

Detection: ECL Basic Kit (RM00020).

Exposure time: 10s.



Immunofluorescence analysis of MCF-7 cells using CS antibody (A5713). Blue: DAPI for nuclear staining.



Confocal immunofluorescence analysis of U2OS cells using CS Monoclonal Antibody (A5713) at dilution of 1:100. Blue: DAPI for nuclear staining.