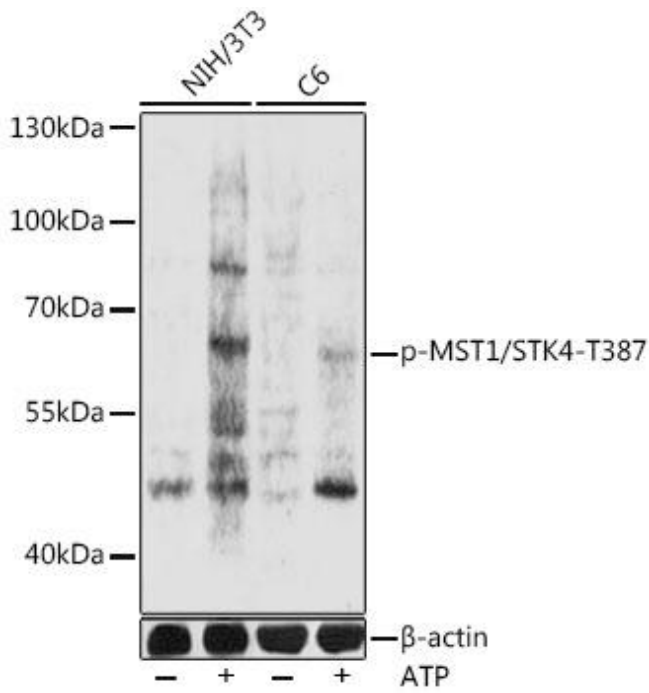




Phospho-MST1/STK4-T387 mouse mAb

货号	YP-mAb-18340
同位型	IgG
应用	WB
种属	Human, Mouse,Rat
其他名称	KRS2; MST1; YSK3; Phospho-MST1/STK4-T387
免疫原	A synthetic phosphorylated peptide around T387 of human MST1/STK4 (NP_006273.1).
稀释	WB 1:500 - 1:2000
纯化工艺	Affinity purification
分子量	59kDa
背景	<p>The protein encoded by this gene is a cytoplasmic kinase that is structurally similar to the yeast Ste20p kinase, which acts upstream of the stress-induced mitogen-activated protein kinase cascade. The encoded protein can phosphorylate myelin basic protein and undergoes autophosphorylation. A caspase-cleaved fragment of the encoded protein has been shown to be capable of phosphorylating histone H2B. The particular phosphorylation catalyzed by this protein has been correlated with apoptosis, and it's possible that this protein induces the chromatin condensation observed in this process.</p>
浓度	1 mg/ml
储存	Store at -20°C. Avoid freeze / thaw cycles. Buffer: PBS with 0.01% thimerosal,50% glycerol,pH7.3.
有关注意事项	Avoid repeated freezing and thawing!
使用建议	This product can be used in immunological reaction related experiments. For more information, please consult technical personnel.

Products Images



Western blot analysis of lysates from NIH/3T3 and C6 cells, using phospho-MST1/STK4-T387 pAb (AP0906) at 1:1000 dilution. NIH/3T3 and C6 cells were treated by ATP(5 mM) at 30°C for 1 hour.

Secondary antibody: HRP-conjugated Goat anti-Rabbit IgG (H+L) (AS014) at 1:10000 dilution.

Lysates/proteins: 25μ g per lane.

Blocking buffer: 3% BSA.

Detection: ECL Basic Kit (RM00020).

Exposure time: 30s.