

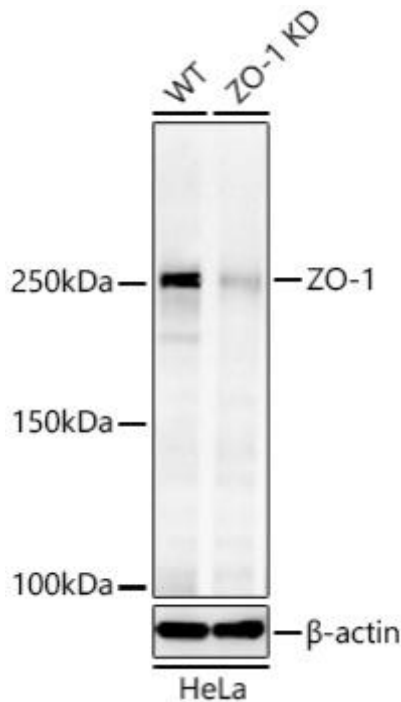


ZO-1 mouse mAb

货号	YP-mAb-18349
同位型	IgG
应用	WB
种属	Human, Mouse,Rat
其他名称	ZO-1
免疫原	Recombinant fusion protein containing a sequence corresponding to amino acids 18-273 of human TJP1 (NP_003248.3).
稀释	WB 1:2500 - 1:5000
纯化工艺	Affinity purification
分子量	250kDa
背景	<p>This gene encodes a member of the membrane-associated guanylate kinase (MAGUK) family of proteins, and acts as a tight junction adaptor protein that also regulates adherens junctions. Tight junctions regulate the movement of ions and macromolecules between endothelial and epithelial cells. The multidomain structure of this scaffold protein, including a postsynaptic density 95/disc-large/zona occludens (PDZ) domain, a Src homology (SH3) domain, a guanylate kinase (GuK) domain and unique (U) motifs all help to co-ordinate binding of transmembrane proteins, cytosolic proteins, and F-actin, which are required for tight junction function. Alternative splicing results in multiple transcript variants encoding different isoforms</p>
浓度	1 mg/ml
储存	Store at -20°C. Avoid freeze / thaw cycles. Buffer: PBS with 0.09% Sodium azide,50% glycerol,pH7.3.
有关注意事项	Avoid repeated freezing and thawing!
使用建议	This product can be used in immunological reaction related experiments. For more information, please consult technical personnel.



Products Images



Western blot analysis of lysates from wild type (WT) and ZO-1 knockdown (KD) HeLa cells using ZO-1 mouse pAb (A0659) at 1:5000 dilution incubated overnight at 4°C.

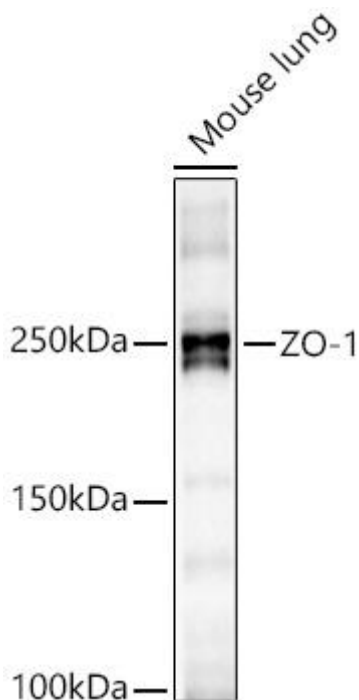
Secondary antibody: HRP-conjugated Goat anti-mouse IgG (H+L) (AS014) at 1:10000 dilution.

Lysates/proteins: 25 µg per lane.

Blocking buffer: 3% nonfat dry milk in TBST.

Detection: ECL Basic Kit (RM00020).

Exposure time: 60s.



Western blot analysis of lysates from Mouse lung using ZO-1 mouse pAb (A0659) at 1:5000 dilution incubated overnight at 4°C.

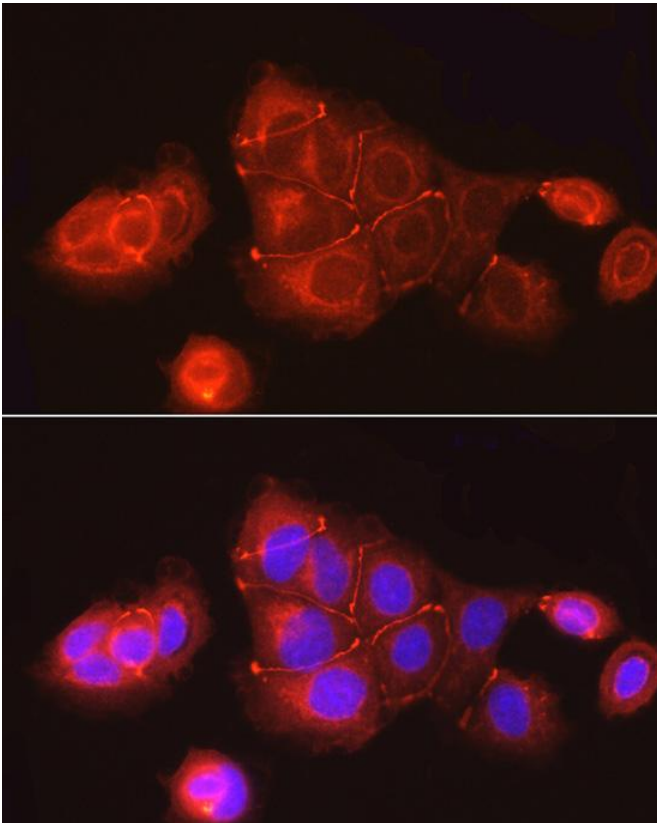
Secondary antibody: HRP-conjugated Goat anti-mouse IgG (H+L) (AS014) at 1:10000 dilution.

Lysates/proteins: 25 µg per lane.

Blocking buffer: 3% nonfat dry milk in TBST.

Detection: ECL Basic Kit (RM00020).

Exposure time: 60s.



Immunofluorescence analysis of MCF7 cells using ZO-1 mouse pAb (A0659) at dilution of 1:100 (40x lens). Secondary antibody: Cy3-conjugated Goat anti-mouse IgG (H+L) (AS007) at 1:500 dilution. Blue: DAPI for nuclear staining.