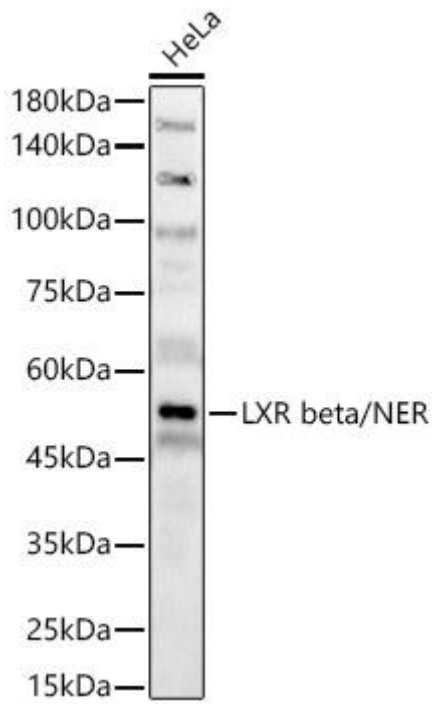




LXR beta/NER Mouse mAb

货号	YP-mAb-18358
同位型	IgG
应用	WB
种属	Human, Mouse,Rat
其他名称	NER; UNR; LXRB; LXR-b; NER-I; RIP15; LXR beta/NER
免疫原	Recombinant fusion protein containing a sequence corresponding to amino acids 1-100 of human LXR beta/NER. (P55055).
稀释	WB 1:100 - 1:500
纯化工艺	Affinity purification
分子量	51kDa
背景	<p>The liver X receptors, LXRA (NR1H3; MIM 602423) and LXRB, form a subfamily of the nuclear receptor superfamily and are key regulators of macrophage function, controlling transcriptional programs involved in lipid homeostasis and inflammation. The inducible LXRA</p> <p>is highly expressed in liver, adrenal gland, intestine, adipose tissue, macrophages, lung, and kidney, whereas LXRB is ubiquitously expressed. Ligand-activated LXRs form obligate heterodimers with retinoid X receptors (RXRs; see MIM 180245) and regulate expression of target genes containing LXR response elements (summary by Korf et al., 2009 [PubMed 19436111]).</p>
浓度	1 mg/ml
储存	-15°C to -25°C/1 year(Do not lower than -25°C)
有关注意事项	Avoid repeated freezing and thawing!
使用建议	This product can be used in immunological reaction related experiments. For more information, please consult technical personnel.

Products Images



Western blot analysis of HeLa, using LXR beta/NER antibody (A22545) at 1:400 dilution.

Secondary antibody: HRP Goat Anti-Mouse IgG (H+L) (AS014) at 1:10000 dilution.

Lysates/proteins: 25 μ g per lane.

Blocking buffer: 3% nonfat dry milk in TBST.

Detection: ECL Basic Kit (RM00020).

Exposure time: 180s.