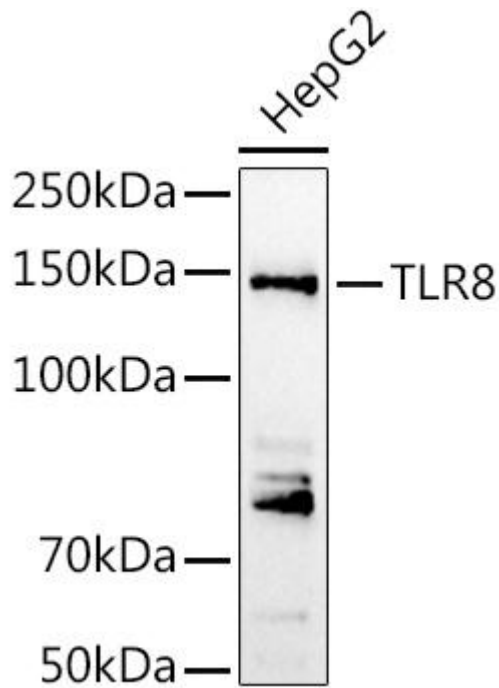




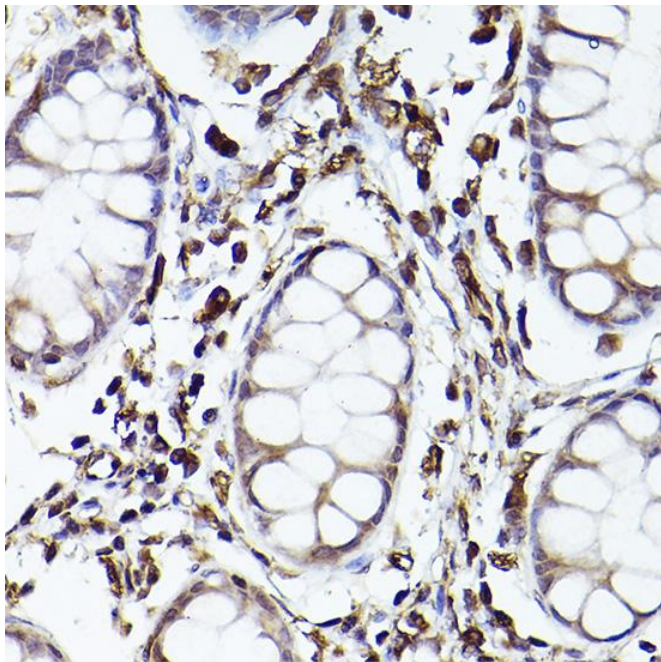
TLR8 Mouse mAb

货号	YP-mAb-18360
同位型	IgG
应用	WB
种属	Human, Mouse,Rat
其他名称	CD288; IMD98; hTLR8; TLR8
免疫原	Recombinant fusion protein containing a sequence corresponding to amino acids 849-1041 of human TLR8 (NP_619542.1).
稀释	WB 1:500 - 1:1000
纯化工艺	Affinity purification
分子量	150kDa
背景	<p>The protein encoded by this gene is a member of the Toll-like receptor (TLR) family which plays a fundamental role in pathogen recognition and activation of innate immunity. TLRs are highly conserved from Drosophila to humans and share structural and functional similarities. They recognize pathogen-associated molecular patterns (PAMPs) that are expressed on infectious agents, and mediate the production of cytokines necessary for the development of effective immunity. The various TLRs exhibit different patterns of expression. This gene is predominantly expressed in lung and peripheral blood leukocytes, and lies in close proximity to another family member, TLR7, on chromosome X.</p>
浓度	1 mg/ml
储存	Store at -20°C. Avoid freeze / thaw cycles. Buffer: PBS with 0.02% sodium azide,50% glycerol,pH7.3.
有关注意事项	Avoid repeated freezing and thawing!
使用建议	This product can be used in immunological reaction related experiments. For more information, please consult technical personnel.

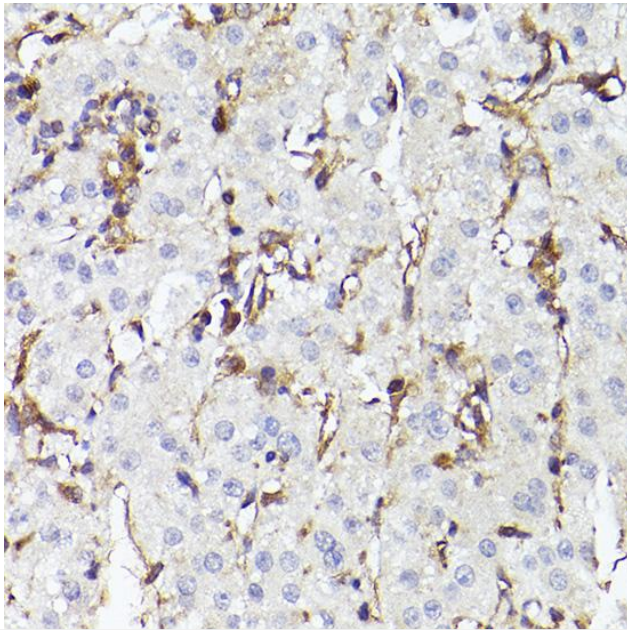
Products Images



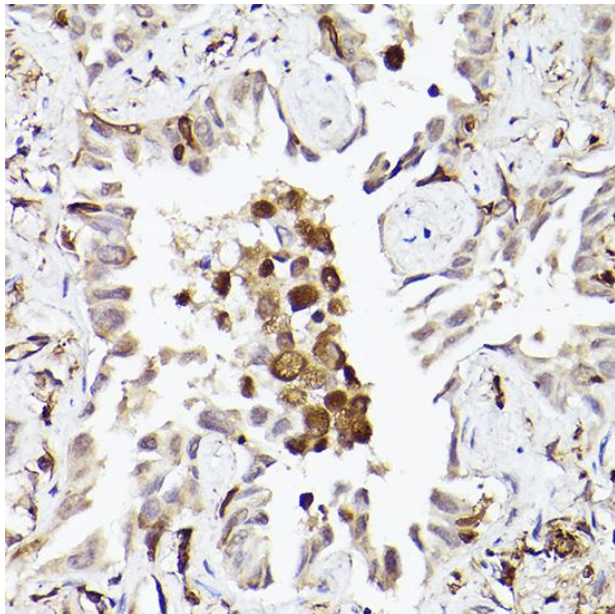
Western blot analysis of lysates from HepG2 cells, using TLR8 Rabbit pAb (A1489) at 1:1000 dilution. Secondary antibody: HRP-conjugated Goat anti-Rabbit IgG (H+L) (AS014) at 1:10000 dilution. Lysates/proteins: 25μg per lane. Blocking buffer: 3% nonfat dry milk in TBST. Detection: ECL Basic Kit (RM00020). Exposure time: 90s.



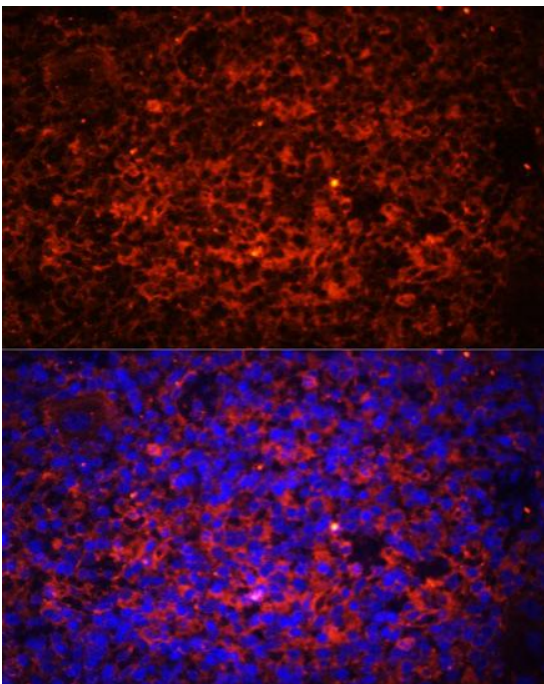
Immunohistochemistry analysis of paraffin embedded Human colon using TLR8 Rabbit pAb (A1489) at dilution of 1:100 (40x lens). High pressure antigen retrieval performed with 0.01M Citrate Bufferr (pH 6.0) prior to IHC staining



Immunohistochemistry analysis of paraffin embedded Human liver cancer using TLR8 Mouse pAb (A1489) at dilution of 1:100 (40x lens). High pressure antigen retrieval performed with 0.01M Citrate Bufferr (pH 6.0) prior to IHC staining



Immunohistochemistry analysis of paraffin embedded Human lung cancer using TLR8 Mouse pAb (A1489) at dilution of 1:100 (40x lens). High pressure antigen retrieval performed with 0.01M Citrate Bufferr (pH 6.0) prior to IHC staining



Immunofluorescence analysis of paraffin embedded rat spleen using TLR8 Mouse pAb (A1489) at dilution of 1:100 (40x lens). Secondary antibody: Cy3-conjugated Goat anti-Mouse IgG (H+L) (AS007) at 1:500 dilution. Blue: DAPI for nuclear staining.