

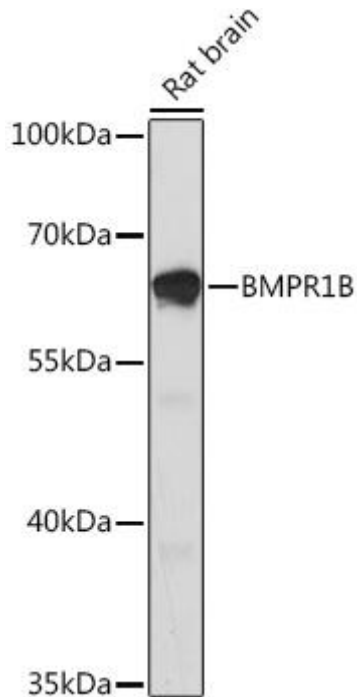


BMPR1B Mouse mAb

货号	YP-mAb-18362
同位型	IgG
应用	WB
种属	Human, Mouse,Rat
其他名称	ALK6; AMD3; AMDD; BDA2; ALK-6; BDA1D; CDw293; BMPR1B
免疫原	Recombinant fusion protein containing a sequence corresponding to amino acids 1-126 of human BMPR1B (NP_001194.1).
稀释	WB 1:500 - 1:1000
纯化工艺	Affinity purification
分子量	51kDa
背景	<p>This gene encodes a member of the bone morphogenetic protein (BMP) receptor family of transmembrane serine/threonine kinases. The ligands of this receptor are BMPs, which are members of the TGF-beta superfamily. BMPs are involved in endochondral bone formation and embryogenesis. These proteins transduce their signals through the formation of heteromeric complexes of 2 different types of serine (threonine) kinase receptors: type I receptors of about 50-55 kD and type II receptors of about 70-80 kD. Type II receptors bind ligands in the absence of type I receptors, but they require their respective type I receptors for signaling, whereas type I receptors require their respective type II receptors for ligand binding. Mutations in this gene have been associated with primary pulmonary hypertension.</p> <p>Several transcript variants encoding two different isoforms have been found for this gene.</p>
浓度	1 mg/ml
储存	Store at -20°C. Avoid freeze / thaw cycles. Buffer: PBS with 0.02% sodium azide,50% glycerol,pH7.3.
有关注意事项	Avoid repeated freezing and thawing!
使用建议	This product can be used in immunological reaction related experiments. For more information, please consult technical personnel.



Products Images



Western blot analysis of lysates from Rat brain, using BMPR1B Mouse pAb (A2005) at 1:1000 dilution.

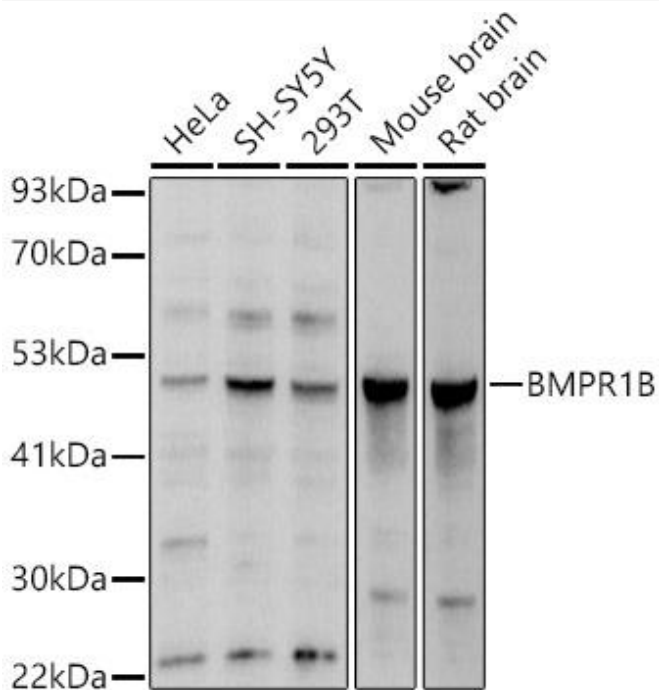
Secondary antibody: HRP-conjugated Goat anti-Mouse IgG (H+L) (AS014) at 1:10000 dilution.

Lysates/proteins: 25 μ g per lane.

Blocking buffer: 3% nonfat dry milk in TBST.

Detection: ECL Enhanced Kit (RM00021).

Exposure time: 3min.



Western blot analysis of various lysates using BMPR1B Mouse pAb (A2005) at 1:1000 dilution.

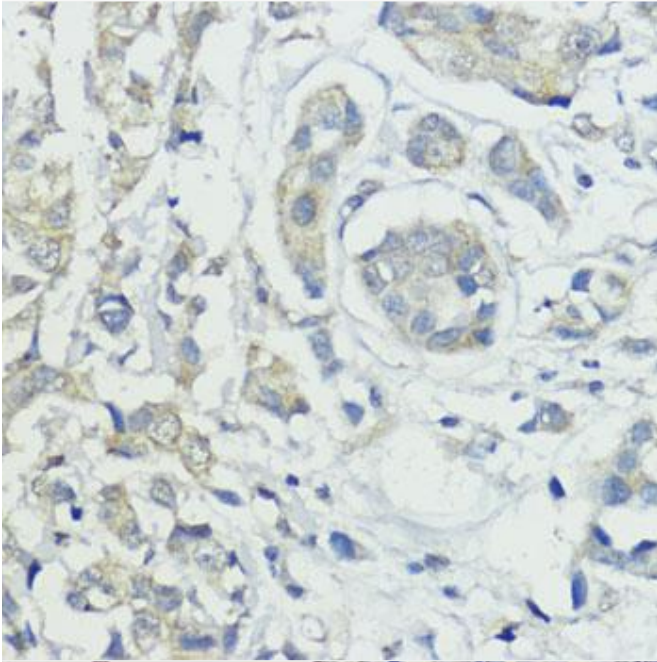
Secondary antibody: HRP-conjugated Goat anti-Mouse IgG (H+L) (AS014) at 1:10000 dilution.

Lysates/proteins: 25 μ g per lane.

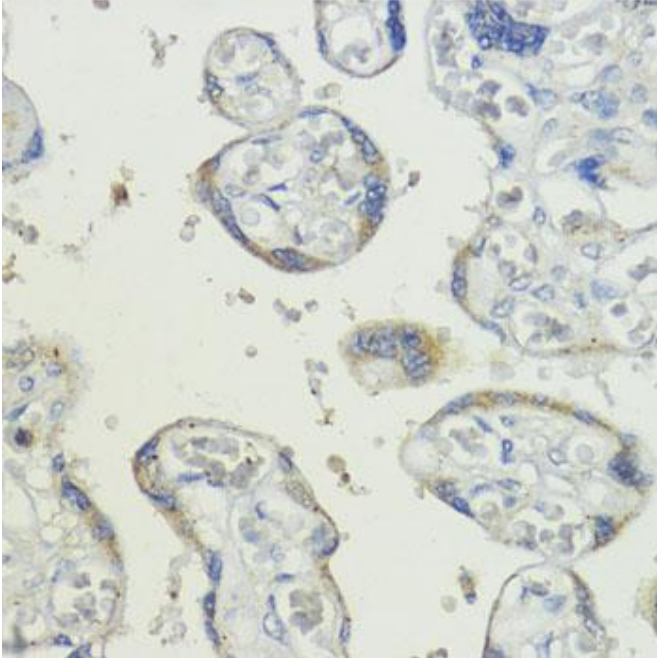
Blocking buffer: 3% nonfat dry milk in TBST.

Detection: ECL Basic Kit (RM00020).

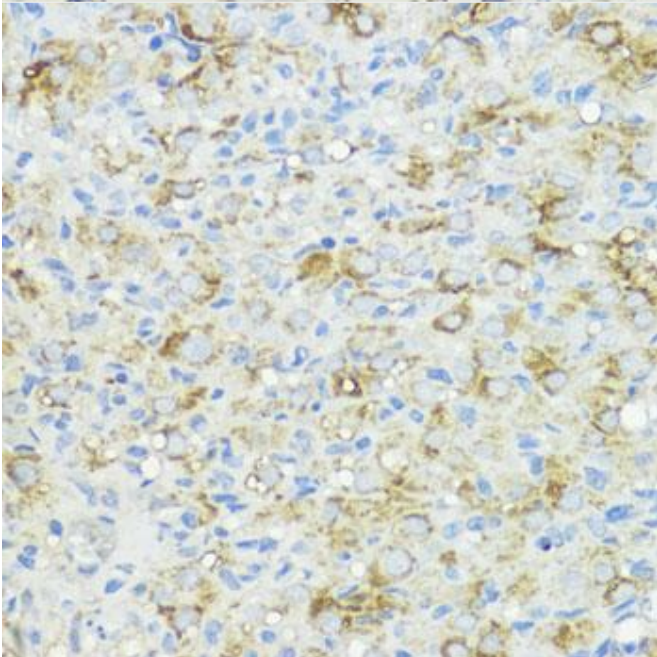
Exposure time: 1s.



Immunohistochemistry analysis of paraffin embedded Human mammary cancer using BMPR1B Mouse pAb (A2005) at dilution of 1:200 (40x lens). Microwave antigen retrieval performed with 0.01M PBS Buffer (pH 7.2) prior to IHC staining



Immunohistochemistry analysis of paraffin embedded Human placenta using BMPR1B Mouse pAb (A2005) at dilution of 1:200 (40x lens). Microwave antigen retrieval performed with 0.01M PBS Buffer (pH 7.2) prior to IHC staining



Immunohistochemistry analysis of paraffin embedded Rat ovary using BMPR1B Mouse pAb (A2005) at dilution of 1:200 (40x lens). Microwave antigen retrieval performed with 0.01M PBS Buffer (pH 7.2) prior to IHC staining.