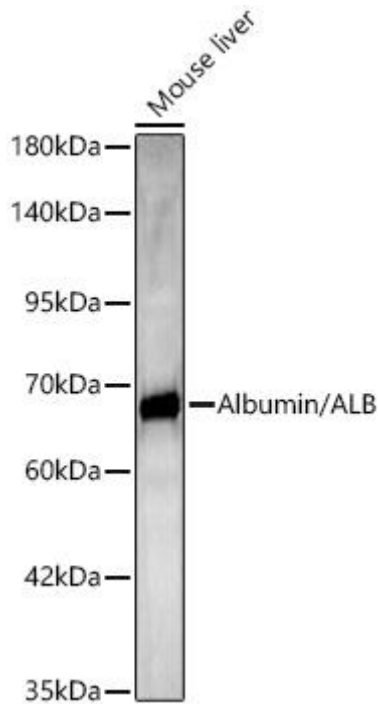




BMPR1B Mouse mAb

货号	YP-mAb-18363
同位型	IgG
应用	WB
种属	Human, Mouse,Rat
其他名称	HSA; FDAHT; PRO0883; PRO0903; PRO1341; Albumin
免疫原	Recombinant fusion protein containing a sequence corresponding to amino acids 25-609 of human Albumin (NP_000468.1)
稀释	WB 1:500 - 1:1000
纯化工艺	Affinity purification
分子量	69kDa
背景	<p>This gene encodes the most abundant protein in human blood. This protein functions in the regulation of blood plasma colloid osmotic pressure and acts as a carrier protein for a wide range of endogenous molecules including hormones, fatty acids, and metabolites, as well as exogenous drugs. Additionally, this protein exhibits an esterase-like activity with broad substrate specificity. The encoded preproprotein is proteolytically processed to generate the mature protein. A peptide derived from this protein, EPI-X4, is an endogenous inhibitor of the CXCR4 chemokine receptor.</p>
浓度	1 mg/ml
储存	Store at -20°C. Avoid freeze / thaw cycles. Buffer: PBS with 0.02% sodium azide,50% glycerol,pH7.3.
有关注意事项	Avoid repeated freezing and thawing!
使用建议	This product can be used in immunological reaction related experiments. For more information, please consult technical personnel.

Products Images



Western blot analysis of lysates from Mouse liver using Albumin/ALB Mouse pAb (A1363) at 1:1000 dilution.

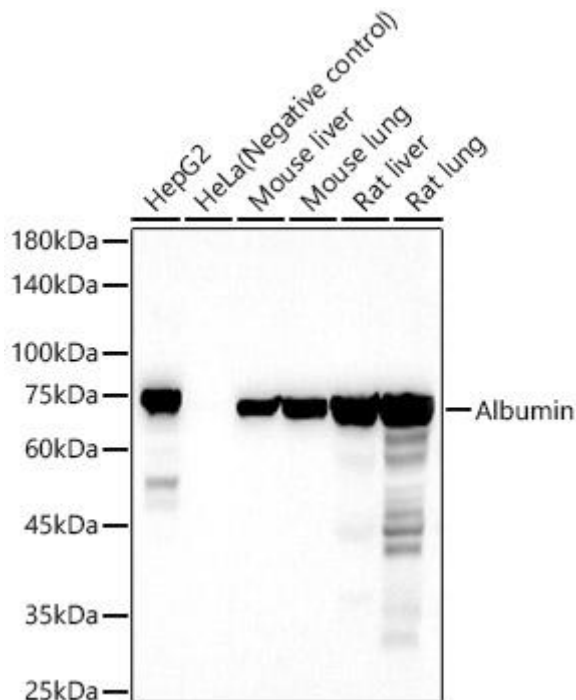
Secondary antibody: HRP-conjugated Goat anti-Mouse IgG (H+L) (AS014) at 1:10000 dilution.

Lysates/proteins: 25 µg per lane.

Blocking buffer: 3% nonfat dry milk in TBST.

Detection: ECL Basic Kit (RM00020).

Exposure time: 20s



Western blot analysis of various lysates, using Albumin Mouse pAb (A1363) at 1:500 dilution.

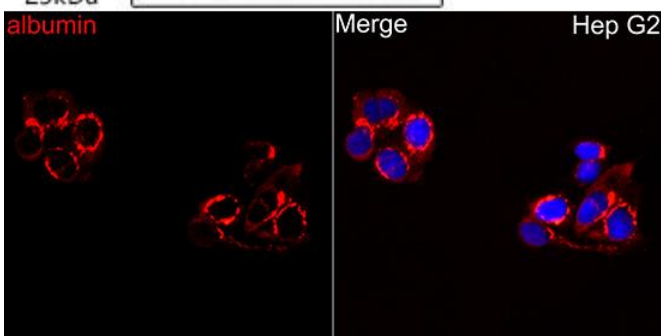
Secondary antibody: HRP-conjugated Goat anti-Mouse IgG (H+L) (AS014) at 1:10000 dilution.

Lysates/proteins: 25µ g per lane.

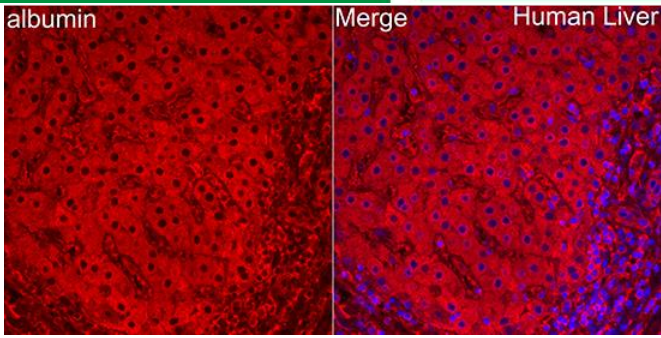
Blocking buffer: 3% nonfat dry milk in TBST.

Detection: ECL Basic Kit (RM00020).

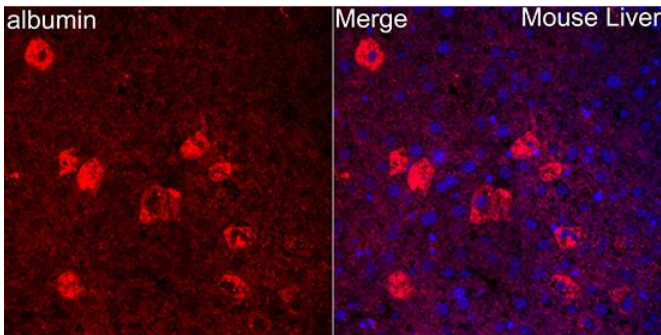
Exposure time: 30s.



Immunofluorescence analysis of Hep G2 cells using Albumin/ALB Mouse pAb (A1363) at dilution of 1:200 (40x lens). Secondary antibody: Cy3-conjugated Goat anti-Mouse IgG (H+L) (AS007) at 1:500 dilution. Blue: DAPI for nuclear staining



Immunofluorescence analysis of paraffin embedded human liver using Albumin/ALB Mouse pAb (A1363) at dilution of 1:200 (40x lens). Secondary antibody: Cy3-conjugated Goat anti-Mouse IgG (H+L) (AS007) at 1:500 dilution. Blue: DAPI for nuclear staining.



Immunofluorescence analysis of paraffin embedded mouse liver using Albumin/ALB Mouse pAb (A1363) at dilution of 1:200 (40x lens). Secondary antibody: Cy3-conjugated Goat anti-Mouse IgG (H+L) (AS007) at 1:500 dilution. Blue: DAPI for nuclear staining.