



## $\beta$ -Amyloid(1-42) Mouse mAb

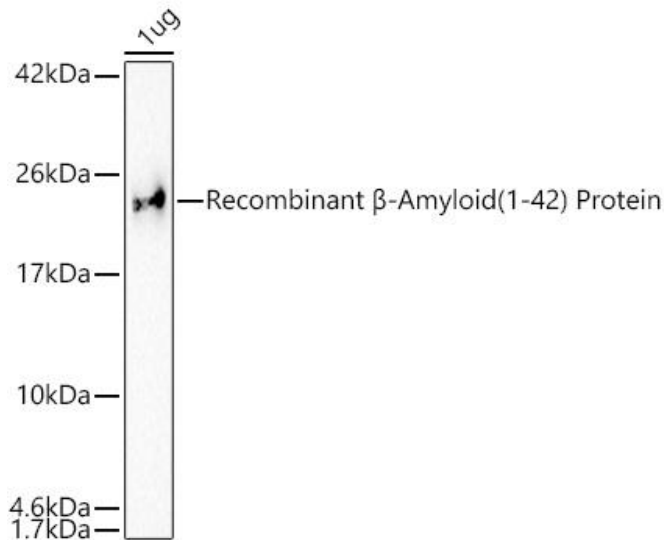
<b>Catalog No</b>	YP-mAb-18380
<b>Isotype</b>	IgG
<b>Reactivity</b>	Human,Mouse,Rat
<b>Applications</b>	WB
<b>Gene Name</b>	
<b>Protein Name</b>	
<b>Immunogen</b>	A synthetic peptide corresponding to a sequence within amino acids 691-770 of human $\beta$ - Amyloid(NP_000475.1)
<b>Specificity</b>	
<b>Formulation</b>	
<b>Source</b>	
<b>Purification</b>	Affinity purification
<b>Dilution</b>	WB 1:500 - 1:2000
<b>Concentration</b>	1 mg/ml
<b>Purity</b>	$\geq 90\%$
<b>Storage Stability</b>	-20°C/1 year
<b>Synonyms</b>	
<b>Observed Band</b>	21.4kDa
<b>Cell Pathway</b>	
<b>Tissue Specificity</b>	
<b>Function</b>	
<b>Background</b>	This gene encodes a cell surface receptor and transmembrane precursor protein that is cleaved by secretases to form a number of peptides. Some of these peptides are secreted and can bind to the acetyltransferase complex APBB1/TIP60 to promote transcriptional activation, while others form the protein basis of the amyloid plaques found in the brains of patients with Alzheimer disease. In addition, two of the peptides are antimicrobial peptides, having been shown to have bacteriocidal and antifungal activities. Mutations in this gene have been implicated in autosomal dominant Alzheimer disease and cerebroarterial amyloidosis (cerebral amyloid angiopathy). Multiple transcript variants encoding several different isoforms have been found for this gene.
<b>matters needing attention</b>	Avoid repeated freezing and thawing!



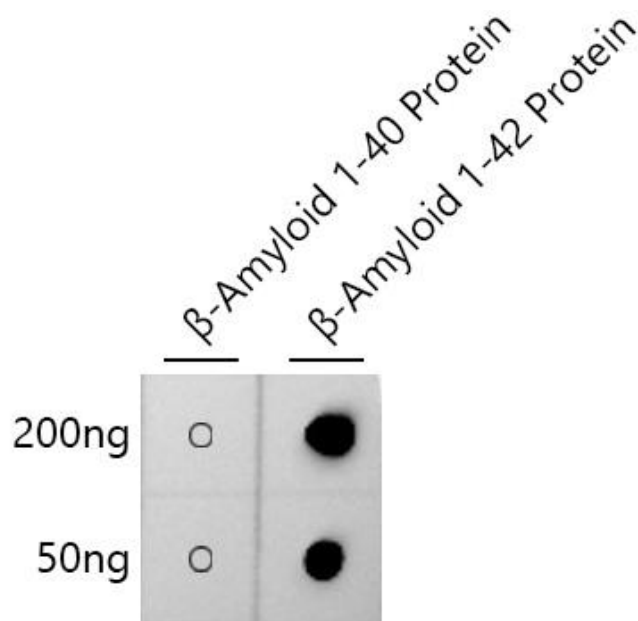
### Usage suggestions

This product can be used in immunological reaction related experiments. For more information, please consult technical personnel.

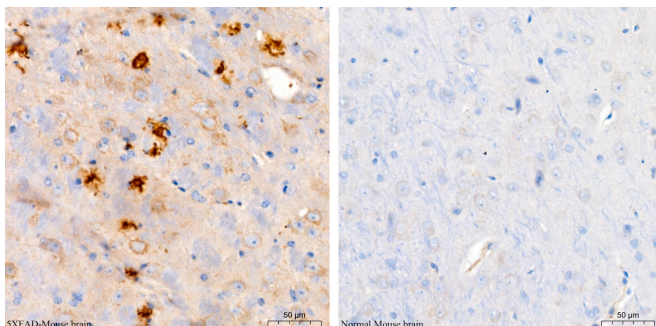
## Products Images



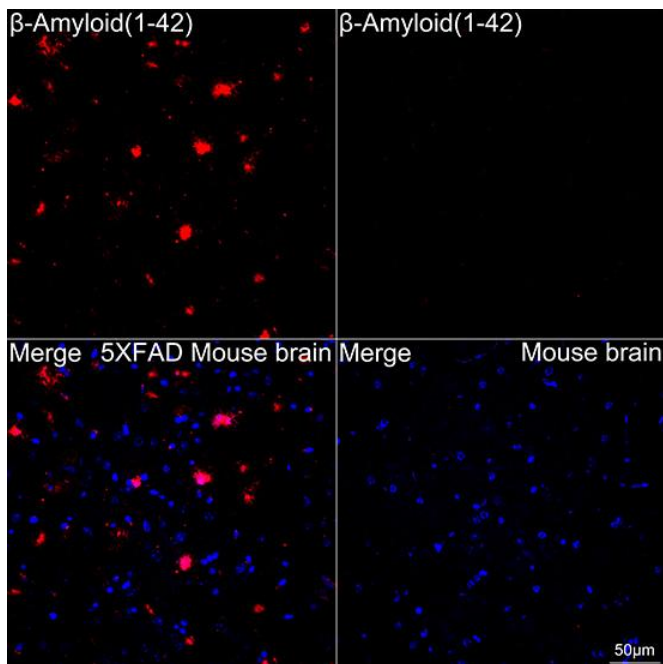
Western blot analysis of lysates from Recombinant  $\beta$ -Amyloid(1-42) Protein using  $\beta$ -Amyloid(1-42) Rabbit mAb (A24422) at 1:5000 dilution incubated overnight at 4°C. Secondary antibody: HRP-conjugated Goat anti-Rabbit IgG (H+L) (AS014) at 1:10000 dilution. Lysates/proteins: 1  $\mu$ g per lane. Blocking buffer: 3% nonfat dry milk in TBST. Detection: ECL Basic Kit (RM00020). Exposure time: 90s.



Dot-blot analysis of  $\beta$ -Amyloid 1-40 and  $\beta$ -Amyloid 1-42 proteins using  $\beta$ -Amyloid(1-42) Rabbit mAb (A24422) at 1:1000 dilution.



Immunohistochemistry analysis of paraffin embedded 5XFAD Mouse brain (model for Alzheimer disease, Left) and BALB/c Mouse brain (normal, Right) using  $\beta$ -Amyloid(1-42) Rabbit mAb (A24422) at a dilution of 1:200 (40x lens). High pressure antigen retrieval performed with 0.01M Citrate Bufferr (pH 6.0) prior to IHC staining



Confocal imaging of paraffin-embedded 5XFAD Mouse brain (model for Alzheimer disease, left) and BALB/c Mouse brain (normal, right) tissue using  $\beta$ -Amyloid(1-42) Rabbit mAb (A24422, dilution 1:200) followed by a further incubation with Cy3 Goat Anti-Rabbit IgG (H+L) (AS007, dilution 1:500) (Red). DAPI was used for nuclear staining (Blue). High pressure antigen retrieval performed with 0.01M Citrate Buffer(pH 6.0) prior to IF staining. Objective: 40x.