

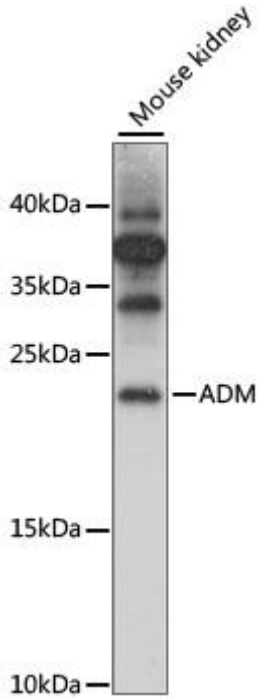


# ADM Mouse mAb

<b>Catalog No</b>	YP-mAb-18408
<b>Isotype</b>	IgG
<b>Reactivity</b>	Human,Mouse,Rat
<b>Applications</b>	WB
<b>Gene Name</b>	
<b>Protein Name</b>	
<b>Immunogen</b>	A synthetic peptide corresponding to a sequence within amino acids 50-150 of human ADM (NP_001115.1).
<b>Specificity</b>	
<b>Formulation</b>	
<b>Source</b>	
<b>Purification</b>	Affinity purification
<b>Dilution</b>	WB 1:500 - 1:2000
<b>Concentration</b>	1 mg/ml
<b>Purity</b>	≥90%
<b>Storage Stability</b>	-20°C/1 year
<b>Synonyms</b>	
<b>Observed Band</b>	20kDa
<b>Cell Pathway</b>	
<b>Tissue Specificity</b>	
<b>Function</b>	
<b>Background</b>	The protein encoded by this gene is a preprohormone which is cleaved to form two biologically active peptides, adrenomedullin and proadrenomedullin N-terminal 20 peptide. Adrenomedullin is a 52 aa peptide with several functions, including vasodilation, regulation of hormone secretion, promotion of angiogenesis, and antimicrobial activity. The antimicrobial activity is antibacterial, as the peptide has been shown to kill <i>E. coli</i> and <i>S. aureus</i> at low concentration.
<b>matters needing attention</b>	Avoid repeated freezing and thawing!
<b>Usage suggestions</b>	This product can be used in immunological reaction related experiments. For more information, please consult technical personnel.



## Products Images



Western blot analysis of lysates from Mouse kidney, using ADM Mouse pAb (A8659) at 1:1000 dilution. Secondary antibody: HRP Goat Anti-Mouse IgG (H+L) (AS014) at 1:10000 dilution. Lysates/proteins: 25 $\mu$  g per lane. Blocking buffer: 3% nonfat dry milk in TBST. Detection: ECL Basic Kit (RM00020). Exposure time: 15s.