



## TLR6 Mouse mAb

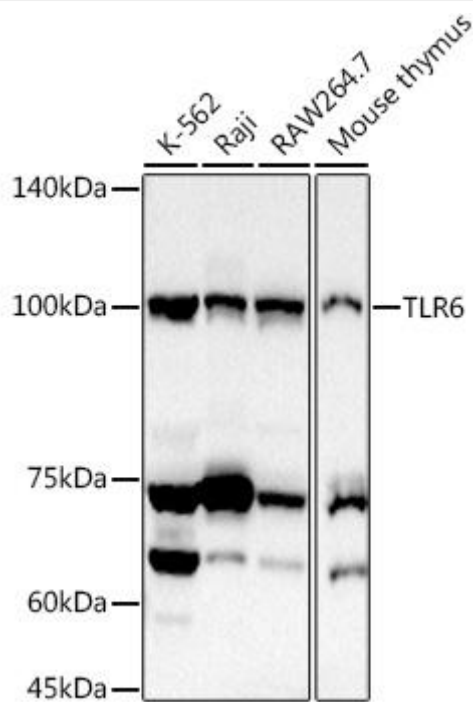
|                           |   |
|---------------------------|---|
| <b>Catalog No</b>         | YP-mAb-18410  |
| <b>Isotype</b>            | IgG   |
| <b>Reactivity</b>         | Human,Mouse,Rat   |
| <b>Applications</b>       | WB  |
| <b>Gene Name</b>          |   |
| <b>Protein Name</b>       |   |
| <b>Immunogen</b>          | A synthetic peptide corresponding to a sequence within amino acids 697-796 of human TLR6 (NP_006059.2).   |
| <b>Specificity</b>        |   |
| <b>Formulation</b>        |   |
| <b>Source</b>             |   |
| <b>Purification</b>       | Affinity purification   |
| <b>Dilution</b>           | WB 1:500 - 1:1000   |
| <b>Concentration</b>      | 1 mg/ml   |
| <b>Purity</b>             | ≥90%  |
| <b>Storage Stability</b>  | -20°C/1 year  |
| <b>Synonyms</b>           |   |
| <b>Observed Band</b>      | 100kDa  |
| <b>Cell Pathway</b>       |   |
| <b>Tissue Specificity</b> |   |
| <b>Function</b>           |   |
| <b>Background</b>         | <p>The protein encoded by this gene is a member of the Toll-like receptor (TLR) family which plays a fundamental role in pathogen recognition and activation of innate immunity. TLRs are highly conserved from Drosophila to humans and share structural and functional similarities. They recognize pathogen-associated molecular patterns (PAMPs) that are expressed on infectious agents, and mediate the production of cytokines necessary for the development of effective immunity. The various TLRs exhibit different patterns of expression. This receptor functionally interacts with toll-like receptor 2 to mediate cellular response to bacterial lipoproteins. A Ser249Pro polymorphism in the extracellular domain of the encoded protein may be associated with an increased of asthma in some populations.</p> |

**matters needing attention**

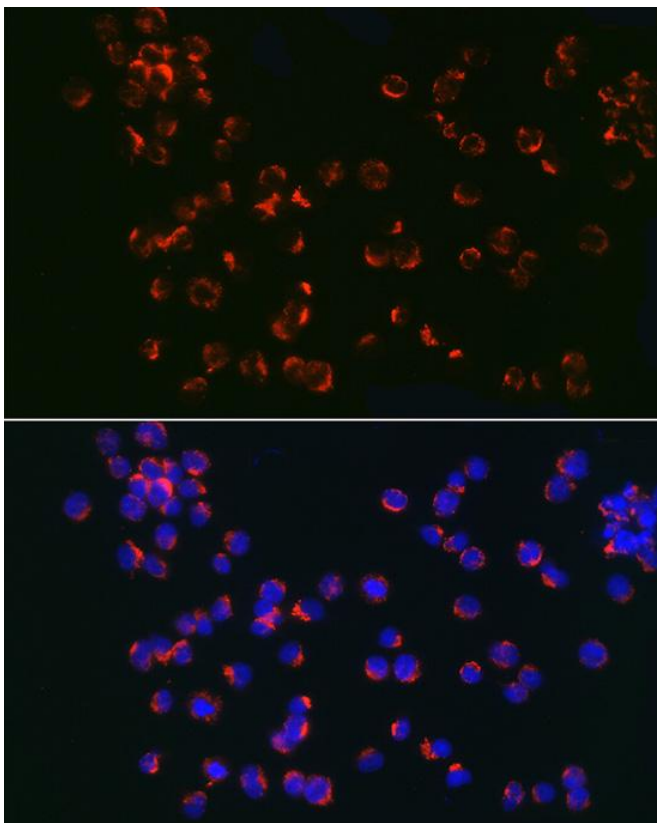
Avoid repeated freezing and thawing!

**Usage suggestions**

This product can be used in immunological reaction related experiments. For more information, please consult technical personnel.

**Products Images**

Western blot analysis of extracts of various cell lines, using TLR6 antibody (A8185) at 1:1000 dilution. Secondary antibody: HRP Goat Anti-Rabbit IgG (H+L) (AS014) at 1:10000 dilution. Lysates/proteins: 25 $\mu$ g per lane. Blocking buffer: 3% nonfat dry milk in TBST. Detection: ECL Basic Kit (RM00020). Exposure time: 10s



Immunofluorescence analysis of Jurkat cells using TLR6 Rabbit pAb (A8185) at dilution of 1:100 (40x lens). Blue: DAPI for nuclear staining.