

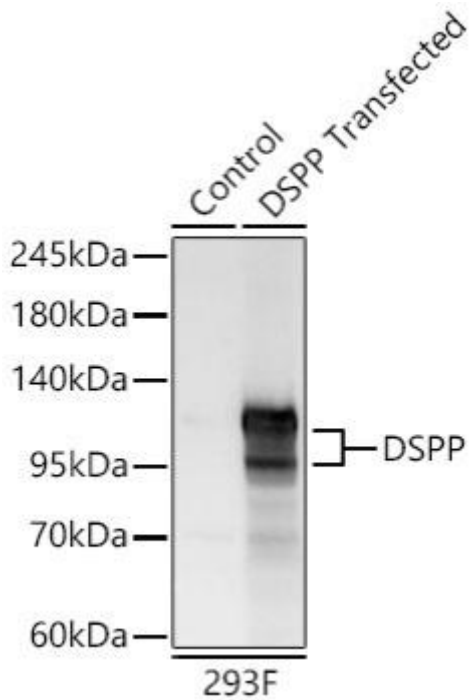


DSPP Mouse mAb

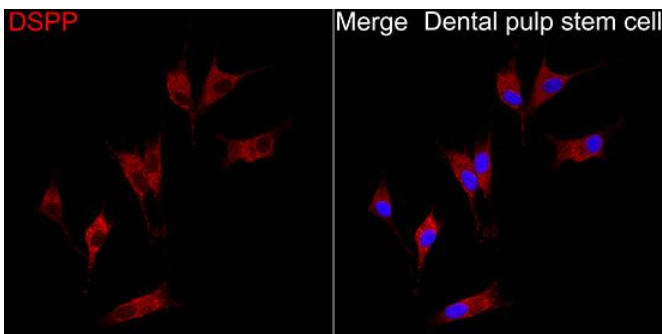
Catalog No	YP-mAb-18422
Isotype	IgG
Reactivity	Human,Mouse,Rat
Applications	WB
Gene Name	
Protein Name	
Immunogen	Recombinant Protein corresponding to a sequence within amino acids 16-230 of human DSPP(NP_055023.2).
Specificity	
Formulation	
Source	
Purification	Affinity purification
Dilution	WB 1:500 - 1:1000
Concentration	1 mg/ml
Purity	≥90%
Storage Stability	-20°C/1 year
Synonyms	DPP; DSP; DGI1; DMP3; DFNA39; DSPP
Observed Band	97kDa,131kDa
Cell Pathway	
Tissue Specificity	
Background	This gene encodes a member of the small integrin-binding ligand N-linked glycoprotein (SIBLING) family of proteins. The encoded preproprotein is secreted by odontoblasts and proteolytically processed to generate two principal proteins of the dentin extracellular matrix of the tooth, dentin sialoprotein and dentin phosphoprotein. These two protein products may play distinct but related roles in dentin mineralization. Mutations in this gene are associated with dentinogenesis imperfecta and dentin dysplasia. This gene is present in a gene cluster on chromosome 4. Allelic differences due to repeat polymorphisms have been found for this gene.
matters needing attention	Avoid repeated freezing and thawing!
Usage suggestions	This product can be used in immunological reaction related experiments. For more information, please consult technical personnel.



Products Images



Western blot analysis of lysates from wild type (WT) and 293F cells transfected with DSPP using DSPP Mouse pAb(A25260) at 1:1000 dilution. Secondary antibody:HRP Goat Anti-Mouse IgG (H+L)(AS014) at 1:10000 dilution. Lysates/proteins: 40.5 μ g per lane. Blocking buffer: 3% nonfat dry milk in TBST. Detection:ECL Basic Kit (RM00020). Exposure time: 10s



Immunofluorescence analysis of Dental pulp stem cell using DSPP Mouse pAb (A25260) at a dilution of 1:100 (40x lens). Secondary antibody: Cy3 Goat Anti-Mouse IgG (H+L) (AS007) at 1:500 dilution. Blue: DAPI for nuclear staining.