



# Notch2 Mouse mAb

<b>Catalog No</b>	YP-mAb-18440
<b>Isotype</b>	IgG
<b>Reactivity</b>	Human,Mouse,Rat
<b>Applications</b>	WB
<b>Gene Name</b>	
<b>Protein Name</b>	
<b>Immunogen</b>	Recombinant Protein corresponding to a sequence within amino acids 1697-1819 of human NOTCH2(NP_077719.2).
<b>Specificity</b>	
<b>Formulation</b>	
<b>Source</b>	
<b>Purification</b>	Affinity purification
<b>Dilution</b>	WB 1:500 - 1:1000
<b>Concentration</b>	1 mg/ml
<b>Purity</b>	≥90%
<b>Storage Stability</b>	-20°C/1 year
<b>Synonyms</b>	NOTCH2; AGS2; HJCYS; hN2; notch 2
<b>Observed Band</b>	110kDa
<b>Cell Pathway</b>	
<b>Tissue Specificity</b>	
<b>Function</b>	
<b>Background</b>	<p>This gene encodes a member of the Notch family. Members of this Type 1 transmembrane protein family share structural characteristics including an extracellular domain consisting of multiple epidermal growth factor-like (EGF) repeats, and an intracellular domain consisting of multiple, different domain types. Notch family members play a role in a variety of developmental processes by controlling cell fate decisions. The Notch signaling network is an evolutionarily conserved intercellular signaling pathway which regulates interactions between physically adjacent cells. In <i>Drosophila</i>, notch interaction with its cell-bound ligands (delta, serrate) establishes an intercellular signaling pathway that plays a key role in development. Homologues of the notch-ligands have also been identified in human, but precise interactions between these ligands and the human notch homologues remain to be determined. This protein is cleaved in the trans-Golgi network, and presented on the cell surface as a heterodimer. This protein functions as a receptor for membrane bound ligands, and may play a role</p>



in vascular, renal and hepatic development. Two transcript variants encoding different isoforms have been found for this gene

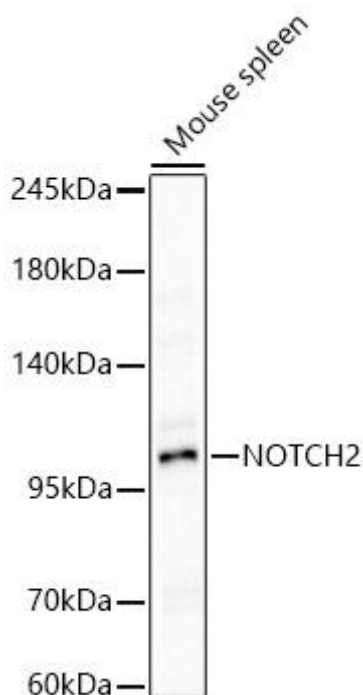
**matters needing attention**

Avoid repeated freezing and thawing!

**Usage suggestions**

This product can be used in immunological reaction related experiments. For more information, please consult technical personnel.

**Products Images**



Western blot analysis of lysates from Mouse spleen using NOTCH2 Mouse pAb(A24877) at 1:1000 dilution. Secondary antibody:HRP Goat Anti-Mouse IgG (H+L)(AS014) at 1:10000 dilution. Lysates/proteins: 25 µg per lane. Blocking buffer: 3% nonfat dry milk in TBST. Detection:ECL Basic Kit (RM00020). Exposure time:10s.