

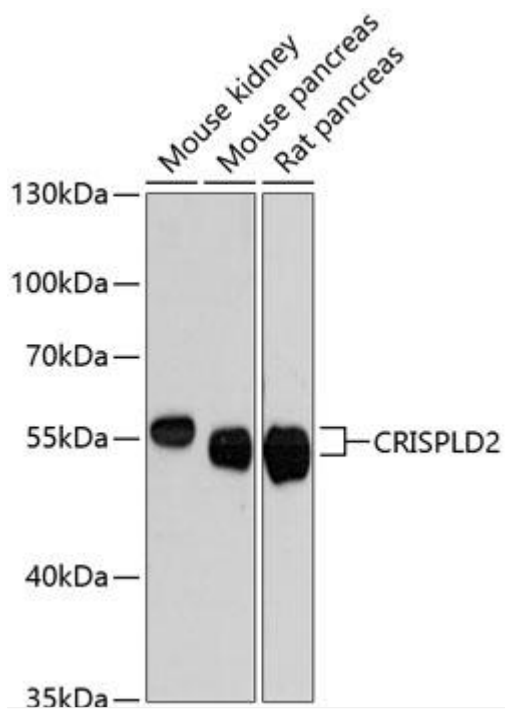


CRISPLD2 Mouse mAb

Catalog No	YP-mAb-18444
Isotype	IgG
Reactivity	Human,Mouse,Rat
Applications	WB
Gene Name	
Protein Name	
Immunogen	Recombinant fusion protein containing a sequence corresponding to amino acids 140-430 of human CRISPLD2 (NP_113664.1).
Specificity	
Formulation	
Source	
Purification	Affinity purification
Dilution	WB 1:500 - 1:2000
Concentration	1 mg/ml
Purity	≥90%
Storage Stability	-20°C/1 year
Synonyms	LGL1; CRISP11; LCRISP2; CRISPLD2
Observed Band	56kDa
Cell Pathway	
Tissue Specificity	
Function	
Background	Predicted to enable glycosaminoglycan binding activity. Involved in face morphogenesis. Located in transport vesicle.
matters needing attention	Avoid repeated freezing and thawing!
Usage suggestions	This product can be used in immunological reaction related experiments. For more information, please consult technical personnel.



Products Images



Western blot analysis of various lysates using CRISPLD2 Mouse pAb (A13195) at 1:3000 dilution.

Secondary antibody: HRP Goat Anti-Mouse IgG (H+L) (AS014) at 1:10000 dilution.

Lysates/proteins: 25 μ g per lane.

Blocking buffer: 3% nonfat dry milk in TBST.

Detection: ECL Enhanced Kit (RM00021).

Exposure time: 90s.