

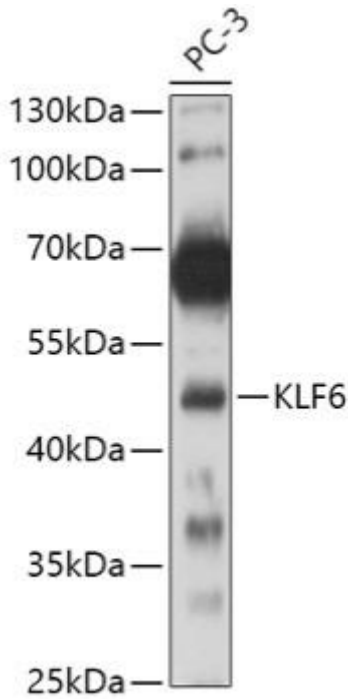


KLF6 Mouse mAb

Catalog No	YP-mAb-18473
Isotype	IgG
Reactivity	Human,Mouse,Rat
Applications	WB
Gene Name	
Protein Name	
Immunogen	Recombinant fusion protein containing a sequence corresponding to amino acids 40-200 of human KLF6 (NP_001291.3).
Specificity	
Formulation	
Source	
Purification	Affinity purification
Dilution	WB 1:500 - 1:2000
Concentration	1 mg/ml
Purity	≥90%
Storage Stability	-20°C/1 year
Synonyms	GBF; ZF9; BCD1; CBA1; CPBP; PAC1; ST12; COPEB; KLF6
Observed Band	45kDa
Cell Pathway	
Tissue Specificity	
Function	
Background	This gene encodes a member of the Kruppel-like family of transcription factors. The zinc finger protein is a transcriptional activator, and functions as a tumor suppressor. Multiple transcript variants encoding different isoforms have been found for this gene, some of which are implicated in carcinogenesis
matters needing attention	Avoid repeated freezing and thawing!
Usage suggestions	This product can be used in immunological reaction related experiments. For more information, please consult technical personnel.



Products Images



Western blot analysis of lysates from PC-3 cells, using KLF6 Mouse pAb (A10011) at 1:500 dilution.

Secondary antibody: HRP Goat Anti-Mouse IgG (H+L) (AS014) at 1:10000 dilution. Lysates/proteins: 25 μ g per lane. Blocking buffer: 3% nonfat dry milk in TBST. Detection: ECL Basic Kit (RM00020). Exposure time: 60s.