



# ACINU Monoclonal Antibody

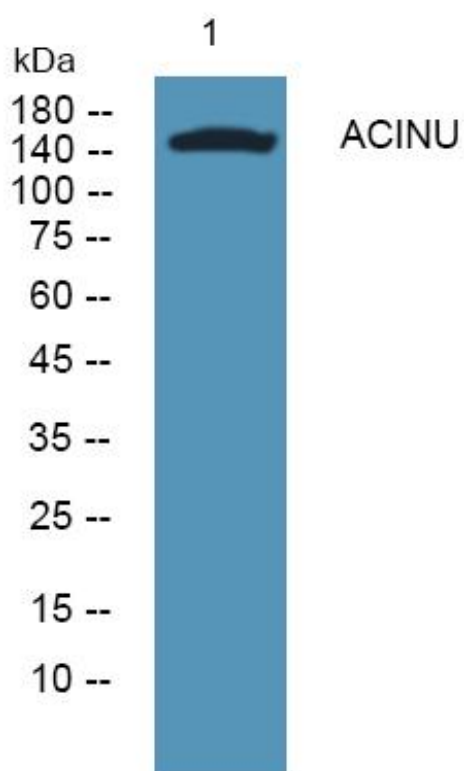
|                           |  |
|---------------------------|--|
| <b>Catalog No</b>         | YP-mAb-04904   |
| <b>Isotype</b>            | IgG  |
| <b>Reactivity</b>         | Human;Mouse  |
| <b>Applications</b>       | WB   |
| <b>Gene Name</b>          | ACIN1 ACINUS KIAA0670  |
| <b>Protein Name</b>       | Apoptotic chromatin condensation inducer in the nucleus (Acinus)   |
| <b>Immunogen</b>          | Synthesized peptide derived from human protein . at AA range: 1120-1200  |
| <b>Specificity</b>        | ACINU Monoclonal Antibody detects endogenous levels of protein.  |
| <b>Formulation</b>        | Liquid in PBS containing 50% glycerol, and 0.02% sodium azide.   |
| <b>Source</b>             | Monoclonal, Mouse,IgG  |
| <b>Purification</b>       | The antibody was affinity-purified from mouse antiserum by affinity-chromatography using epitope-specific immunogen.   |
| <b>Dilution</b>           | WB 1:500-1:2000  |
| <b>Concentration</b>      | 1 mg/ml  |
| <b>Purity</b>             | ≥90%   |
| <b>Storage Stability</b>  | -20°C/1 year   |
| <b>Synonyms</b>           |  |
| <b>Observed Band</b>      | 147kD  |
| <b>Cell Pathway</b>       | Nucleus. Nucleus speckle. Nucleus, nucleoplasm. Phosphorylation on Ser-1180 by SRPK2 redistributes it from the nuclear speckles to the nucleoplasm.  |
| <b>Tissue Specificity</b> | Ubiquitous. The Ser-1180 phosphorylated form (by SRPK2) is highly expressed and phosphorylated in patients with myeloid hematologic malignancies.  |
| <b>Function</b>           | function:Induces apoptotic chromatin condensation after activation by CASP3.,PTM:Undergoes proteolytic cleavage; the processed form is active, contrary to the uncleaved form.,similarity:Contains 1 SAP domain.,subunit:Interacts with API5.,tissue specificity:Ubiquitous.,  |
| <b>Background</b>         | Apoptosis is defined by several morphologic nuclear changes, including chromatin condensation and nuclear fragmentation. This gene encodes a nuclear protein that induces apoptotic chromatin condensation after activation by caspase-3, without inducing DNA fragmentation. This protein has also been shown to be a component of a splicing-dependent multiprotein exon junction complex (EJC) that is deposited at splice junctions on mRNAs, as a consequence of pre-mRNA splicing. It may thus be involved in mRNA metabolism associated with splicing. Alternatively spliced transcript variants encoding different isoforms have been described for this gene. [provided by RefSeq, Oct 2011], |

**matters needing attention**

Avoid repeated freezing and thawing!

**Usage suggestions**

This product can be used in immunological reaction related experiments. For more information, please consult technical personnel.

**Products Images**

Western Blot analysis of various cells using ACINU Monoclonal Antibody