

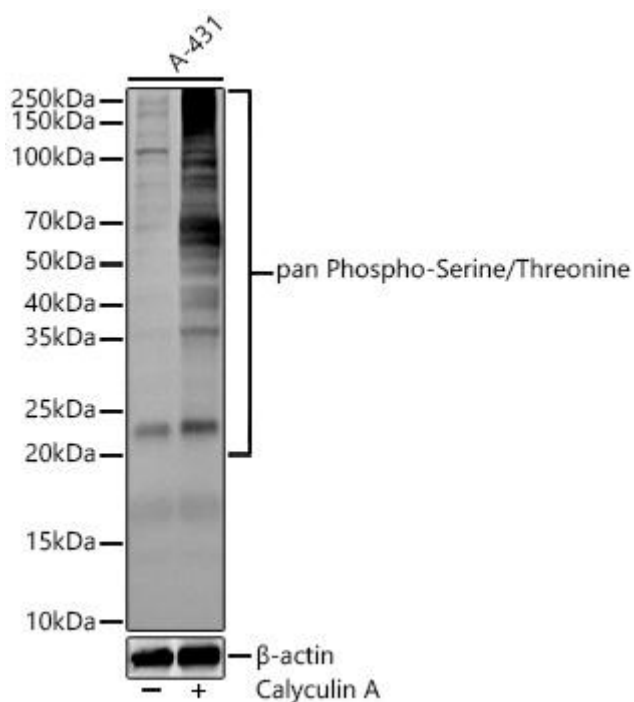


# pan Phospho-Serine/Threonine Mouse mAb

Catalog No	YP-mAb-18568
Isotype	IgG
Reactivity	Human,Mouse,Rat
Applications	WB
Gene Name	
Protein Name	
Immunogen	A synthetic peptide corresponding to a sequence containing phosphorylated Serine/Threonine.
Specificity	
Formulation	
Source	
Purification	Affinity purification
Dilution	WB 1:1000 - 1:8000
Concentration	1 mg/ml
Purity	≥90%
Storage Stability	-20°C/1 year
Synonyms	
Observed Band	10kDa
Cell Pathway	
Tissue Specificity	
Function	
Background	Protein phosphorylation is one of the main key regulatory mechanisms by which extracellular signals are conveyed. Global alteration of signal transduction by inhibition of serine/threonine dephosphorylation has recently been shown to markedly potentiate cancer cell killing by the DNA-methylating drug, temozolomide.
matters needing attention	Avoid repeated freezing and thawing!
Usage suggestions	This product can be used in immunological reaction related experiments. For more information, please consult technical personnel.



## Products Images



Western blot analysis of lysates from A-431 cells using pan Phospho-Serine/Threonine Mouse mAb (AP1067) at 1:1000 dilution incubated overnight at 4°C. A-431 cells were treated by Calyculin A (50 nM) at 37°C for 30 minutes after serum-starvation overnight. Secondary antibody: HRP-conjugated Goat anti-Mouse IgG (H+L) (AS003) at 1:10000 dilution. Lysates/proteins: 30 µg per lane. Blocking buffer: 3 % nonfat dry milk in TBST. Detection: ECL Basic Kit (RM00020). Exposure time: 60s