

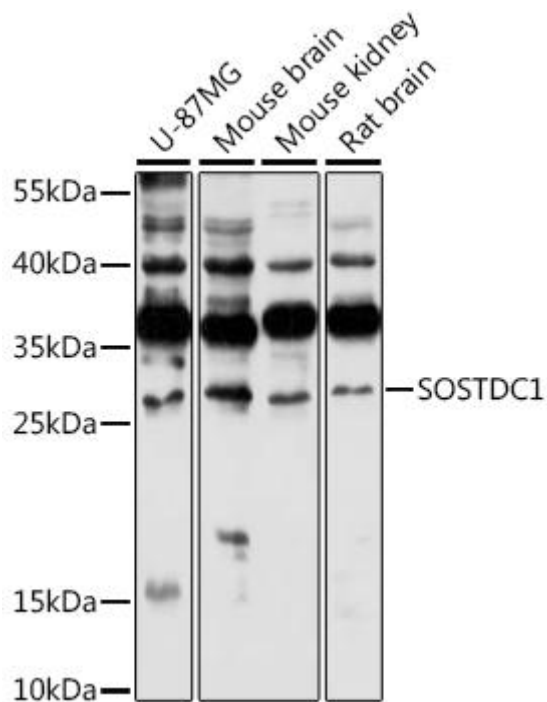


# SOSTDC1 Mouse mAb

<b>Catalog No</b>	YP-mAb-18638
<b>Isotype</b>	IgG
<b>Reactivity</b>	Human, Mouse, Rat
<b>Applications</b>	WB
<b>Gene Name</b>	
<b>Protein Name</b>	
<b>Immunogen</b>	Recombinant fusion protein containing a sequence corresponding to amino acids 115-206 of human SOSTDC1 (NP_056279.1).
<b>Specificity</b>	
<b>Formulation</b>	
<b>Source</b>	
<b>Purification</b>	Affinity purification
<b>Dilution</b>	WB 1:500-2000
<b>Concentration</b>	1 mg/ml
<b>Purity</b>	≥90%
<b>Storage Stability</b>	-20°C/1 year
<b>Synonyms</b>	DAND7; USAG1; CDA019; ECTODIN; SOSTDC1
<b>Observed Band</b>	26kDa
<b>Cell Pathway</b>	
<b>Tissue Specificity</b>	
<b>Function</b>	
<b>Background</b>	This gene is a member of the sclerostin family and encodes an N-glycosylated, secreted protein with a C-terminal cystine knot-like domain. This protein functions as a bone morphogenetic protein (BMP) antagonist. Specifically, it directly associates with BMPs, prohibiting them from binding their receptors, thereby regulating BMP signaling during cellular proliferation, differentiation, and programmed cell death.
<b>matters needing attention</b>	Avoid repeated freezing and thawing!
<b>Usage suggestions</b>	This product can be used in immunological reaction related experiments. For more information, please consult technical personnel.



## Products Images



Western blot analysis of various lysates using SOSTDC1 Mouse pAb (A16315) at 1:1000 dilution. Secondary antibody: HRP Goat Anti-Mouse IgG (H+L) (AS014) at 1:10000 dilution. Lysates/proteins: 25μg per lane. Blocking buffer: 3% nonfat dry milk in TBST. Detection: ECL Basic Kit (RM00020). Exposure time: 3min.